

# Zebra TC72 / TC77 Mobile Computers

## Accessories Guide



Contact **mobit** for more info:

- DE/EN/IT: **+41 (0)44 800 16 30**, CH-8306 Brüttisellen
- FR: **+41 (0)21 651 98 98**, CH-1020 Renens
- E-mail: [info@mobit.ch](mailto:info@mobit.ch)
- Contact form on [www.mobit.ch](http://www.mobit.ch)

ideal with  
mobit m|ES  
software  
solution



# Zebra TC7X – Overview of Accessories



don't forget:  
102651 (mobit.ch)  
CH Power Cable "Standard"  
(T12-C13, 3-pin, black, 2m)

# Zebra TC7X – Batteries / Battery Charging

## 4620 mAh Battery

### BTRY-TC7X-46MPP-01

TC7X PowerPrecision+ spare lithium ion Battery, 4620mAh (single) Advanced new battery technology, provides a higher level of intelligence (State of Charge and State of Health) to deliver maximum performance.

### BTRY-TC7X-46MPP-10

10-Pack



## Charging LED indicators

Off	Battery not charging
Solid Amber	Healthy battery charging
Solid Green	Healthy battery charging complete
Fast Blink Red	Charging error
Solid Red	Unhealthy battery charging or fully charged

## Spare Battery Charging Options

### SAC-TC7X-4BTYP-01

Drop in style 4-Slot Battery Charger with LEDs to indicate Charge State. Can be docked and powered in the 5-Slot Cradle via adapter cup (Sold Separately) or used standalone.

When used stand-alone requires Power Supply:

**PWR-BGA12V50W0WW** and a DC Line cord: **CBL-DC-388A1-01** and country specific AC line cord (Cords and Power Supplies Sold Separately). Compatible with both PowerPrecision and PowerPrecision Plus Batteries



### Required Power Supply and DC Cable for Battery Charger:

Power supply for 4-slot battery charger: 100-240 VAC, 12VDC, 4.16A.

(PN: PWR-BGA12V50W0WW)

**Requires:** Country specific AC grounded line cord.



DC cable for Level 6 power supply PWR-BGA12V50W0WW (12 VDC, 4.16A), 1.8 M length. (PN: CBL-DC-388A1-01)

**don't forget:**  
**102651 (mobit.ch)**  
CH Power Cable "Standard"  
(T12-C13, 3-pin, black, 2m)



# Zebra TC7X – Charging Options

## Single Slot ShareCradle



### ShareCradle, Charge & Ethernet Communication

The Single Slot ShareCradle is designed to provide the best desktop solution. Available in Charge-Only or USB/Ethernet variants, the Single Slot ShareCradles accommodate 1x TC70(x)/TC75(x) Series and 1x spare battery.

*Note: Single Slot ShareCradles require power supply: PWR-BGA12V50W0WW and requires a DC line cord: CBL-DC-388A1-01 and country specific AC line cord (Cords and Power Supplies Sold Separately)*

**CRD-TC7X-SE2CPP-01:** Single Slot Charge Only ShareCradle with spare battery charger for 1x TC7x with 1x spare battery. Compatible with both PowerPrecision and PowerPrecision Plus batteries.

**CRD-TC7X-SE2EPP-01:** Single Slot USB/Ethernet ShareCradle with spare battery charger for 1x TC7x and 1x spare battery. Compatible with both PowerPrecision and PowerPrecision Plus batteries.

## Single Slot Ethernet Module



### MOD-MT2-EU1-01

USB to Ethernet Module integrated into the bottom of the cradle providing a mechanical switch between USB and Ethernet

## Required for Single Slot cradle



Power supply for 2-slot cradle: 100-240 VAC, 12VDC, 4.16A. (PN: PWR-BGA12V50W0WW)  
**Requires:** Country specific AC grounded line cord.



DC cable for power supply PWR-BGA12V50W0WW. (12 VDC, 4.16A) 1.8m length. (PN: CBL-DC-388A1-01)

### don't forget:

**102651 (mobit.ch)**  
CH Power Cable "Standard"  
(T12-C13, 3-pin, black, 2m)

# Zebra TC7X – Charging Options

## Required for Multi-Slot ShareCradle

Power supply for multi-slot cradle: 100-240 VAC, 12VDC, 9A. (PN: PWR-BGA12V108W0WW)

**Requires:** Country specific AC grounded line cord (sold separately).



DC cable provides power from the power supply to multi-slot charge-only and Ethernet cradles.  
(PN: CBL-DC-381A1-01)



**don't forget:**  
**102651 (mobit.ch)**  
CH Power Cable "Standard"  
(T12-C13, 3-pin, black, 2m)

### Notes:

1. 5-Slot Cradles require Power Supply: **PWR-BGA12V108W0WW**; and requires a DC line cord: **CBL-DC-381A1-01** and country specific AC line cord (*cords sold Separately*)
2. Optional 4-Slot Battery Charger, 4-Slot Battery Charger Adapter Cup and Mounting Accessory sold separately

## Multi-Slot ShareCradle



The 5-Slot ShareCradles provide high density & flexibility. Available in Charge-Only or Ethernet variants, the 5-Slot Share Cradles can accommodate either 5x or 4x TC70(x)/TC75(x) Series plus 4x spare batteries off of one power supply via the 4-Slot Battery Charger Adapter Cup (*Sold Separately*). The 5-Slot ShareCradles can be racked/mounted in a standard 19 in. rack system via the mounting accessory.

**CRD-TC7X-SE5C1-01:** TC7X 5-Slot Charge-Only Cradle for 5x TC7Xs or 4x TC7Xs 4x spare batteries off of one power supply via Adapter Cup sold separately. PWR-BGA12V108W0WW, country specific AC line cord and DC Line Cord CBL-DC-382A1-01 (Cords and Power Supplies Sold Separately)

**CRD-TC7X-SE5EU1-01:** TC7X 5-Slot Ethernet Cradle for 5x TC7Xs or 4x TC7Xs 4x spare batteries off of one power supply via Adapter Cup sold separately. PWR-BGA12V108W0WW, country specific AC line cord and DC Line Cord CBL-DC-382A1-01 (Cords and Power Supplies Sold Separately)

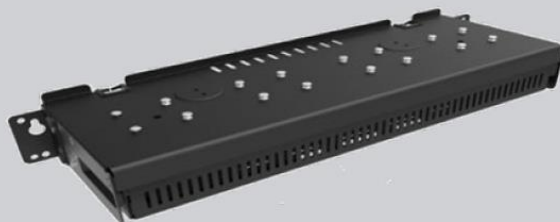
# Zebra TC7X – Mount Options for Cradles

## Mount Options for Multi-Slot Cradles

### MAXIMUM DENSITY

#### RACK MOUNTED SOLUTION:

The Rack/Wall Mount Bracket has been optimized to work on a standard 19-inch IT rack. The brackets can also be configured in different angles for maximum flexibility.



### Rack/Wall Bracket for Multi-Slot ShareCradle



#### BRKT-SCRD-SMRK-01

Rack/Wall mounting bracket is designed to help customers install any Single-Slot or Multi-Slot ShareCradle on a wall or a 19" IT rack. The bracket also enables the installation of up to four 4-Slot Spare Battery Chargers together on a wall or standard 19" IT rack.

### 4-slot Battery Charging Solution

#### CUP-SE-BTYADP1-01

ShareCradle 4-Slot battery charger adapter cup. Allows for a 4-Slot Battery Charger to be charged and docked on the 5-Slot ShareCradles

#### CRD-TC7X-SE5C1-01

TC7X 5-Slot Charge-Only Cradle for 5x TC7Xs or 4x TC7Xs 4x spare batteries off of one power supply via Adapter Cup sold separately. PWR-BGA12V108W0WW, country specific AC line cord and DC Line Cord CBL-DC-382A1-01 (Cords and Power Supplies Sold Separately)



don't forget:

102651 (mobit.ch)

CH Power Cable "Standard"  
(T12-C13, 3-pin, black, 2m)

# Zebra TC7X – Trigger Handle

## TC7X Attachable Trigger

### TRG-TC7X-SNP1-02

TC70(x)/TC75(x) Snap-On Trigger Handle. Easily attaches to bottom housing and easily removed to access the battery. The trigger handle includes a wrist tether that is attached to the trigger and the bottom housing of the device



### ShareCradle Compatibility Varies Based on Trigger Cleat

For Use With Charge-Only ShareCradle	<b>ADP-TC7X-CLH10-10</b> - pack of 10 pairs of cleats + straps – compatible to leave in with trigger gun
For Use With Ethernet ShareCradle	<b>ADP-TC7X-CLPTH1-20</b> - pack of 20 cleats – compatible to leave in (but trigger gun needs to be removed)

Contact **mobit** for more info:

- DE/EN/IT: **+41 (0)44 800 16 30**, CH-8306 Brüttisellen
- FR: **+41 (0)21 651 98 98**, CH-1020 Renens
- E-mail: [info@mobit.ch](mailto:info@mobit.ch)
- Contact form on [www.mobit.ch](http://www.mobit.ch)



# Zebra TC7X – Soft Goods

## Hand Strap

### SG-TC7X-HSTR2-03

3-pack of hand straps. Made of leather and Hypalon, this adjustable hand strap provides comfort to support a wide range of hand sizes while resisting wear in rugged environments. The hand strap also provides a loop tether point for the optional stylus. Plastic clip latches into terminal for easy insertion and removal



## Soft Holster

### SG-TC7X-HLSTR1-02

Soft holster for vertical orientation with open bucket design to accommodate hand strap and snap-ons, such as the MSR for easy insertion and removal. Includes loop for optional stylus



## Stylus & Screen Protector

### SG-TC7X-STYLUS-03

Stylus with coiled tether 3-pack. Made of conductive carbon-filled plastic material, optimized for enterprise durability.

(Stylus only 3-Pack: SG-TC7X-STYLUS1-03)  
(Tether only 3-Pack: KT-TC7X-TETHR1-03)



### SG-TC7X-SCRNTMP-01

This optional screen protector safeguards the display, eliminates sunlight glare and maintains clarity of your mobile computer. Part contains 1 each, and compatible with the TC70x/TC75x (Android) Only



## Rigid Holster

### SG-TC7X-RHLSTR1-01

Rigid Holster with snap-in design. Rotating Belt Clip with ability to insert in either direction. Compatible with Snap-on Accessories excluding the Trigger Handle.





# Zebra TC7X – Audio Headsets

## Rugged Headset

### HS2100-OTH

HS2100 Rugged Wired Headset Over-The-Head Headband includes HS2100 Boom Module and HSX100 OTH Headband Module



## Headset

### HDST-35MM-PTVP-01

Over the ear headset with mic and PTT button. Requires 3.5MM adapter cable CBL-TC51-HDST35-01 (sold separately).



## Audio Jack Adapter

### ADP-TC7X-AUD35-01

Audio Accessory-Audio Adapter, Snap-On 3.5MM Audio Jack Adapter.



## Bluetooth Headset

### HS3100-OTH

HS3100 Rugged Bluetooth Headset Over-The-Head Headband includes HS3100 Boom Module and HSX100 OTH Headband Module



# Zebra TC7X – Installation on Vehicles

## Auto Charge Cable

### CHG-TC7X-CLA1-02

TC7X Auto Charging Cable Cup. Snaps onto the bottom of TC7x, allowing the users to charge their TC7x via a Vehicles Cigarette Light Adapter CLA.



...and many more accessories for installation on vehicles, forklifts, etc.



Contact **mobit** for more info:

- DE/EN/IT: **+41 (0)44 800 16 30**, CH-8306 Brüttisellen
- FR: **+41 (0)21 651 98 98**, CH-1020 Renens
- E-mail: **[info@mobit.ch](mailto:info@mobit.ch)**
- Contact form on **[www.mobit.ch](http://www.mobit.ch)**

# Zebra TC72 / TC77 Mobile Computers

## Accessories Guide



Contact **mobit** for more info:

- DE/EN/IT: **+41 (0)44 800 16 30**, CH-8306 Brüttisellen
- FR: **+41 (0)21 651 98 98**, CH-1020 Renens
- E-mail: [info@mobit.ch](mailto:info@mobit.ch)
- Contact form on [www.mobit.ch](http://www.mobit.ch)

ideal with  
mobit m|ES  
software  
solution

