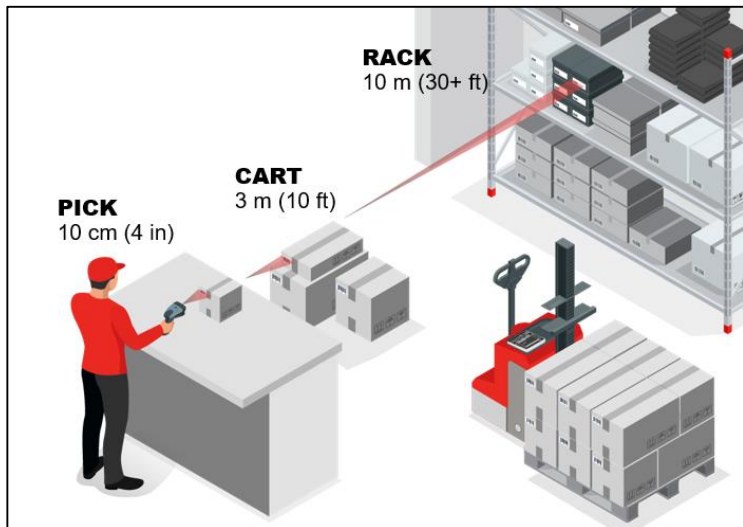


Honeywell CT47 Mobile Computer

Products, Accessories and Services Guide

Contact **mobit** for more info:

- DE/EN/IT: **+41 (0)44 800 16 30**, CH-8306 Brüttisellen
- FR: **+41 (0)21 651 98 98**, CH-1020 Renens
- E-mail: info@mobit.ch
- Contact form on www.mobit.ch



Honeywell CT47 – S0703 Standard Range

Included in the box:

- CT47 Mobile Computer
- Battery (CT4X-BTSC-001)
- USB Type C cable
- Hand strap
- SIM/SD Card Cover Screw

(Stylus is NOT included, but available to order separately as an accessory)



S0703 Standard Range



CT47 Android - 5G WWAN - S0703 - 8GB RAM / 128GB Flash

CT47-X1N-57D1E0G

CT47, 5G WWAN, 5.5 inch Display, Wi-Fi 6E 802.11 a/b/g/n/ac/d/h/i/r/k/v/w/mc/ax, 2x2 MU-MIMO, BT5.2 & 2nd BLE, 8GB RAM/128GB Flash, S0703 Standard Range, 13MP Rear Camera / 8MP Front Camera, Fingerprint Sensor, Android (GMS), Device Client Pack (DCP) Pre-Loaded (1 Year DCP Term License), 1 x Nano SIM & 1 x eSIM, Standard, 4,775mAh Standard Battery, Global

CT47 Android - Wi-Fi Only - S0703 - 8GB RAM / 128GB Flash

CT47-X0N-57D100G

CT47, WLAN, 5.5 inch Display, Wi-Fi 6E 802.11 a/b/g/n/ac/d/h/i/r/k/v/w/mc/ax, 2x2 MU-MIMO, BT5.2 & 2nd BLE, 8GB RAM/128GB Flash, S0703 Standard Range, 13MP Rear Camera / 8MP Front Camera, Fingerprint Sensor, Android (GMS), Device Client Pack (DCP) Pre-Loaded (1 Year DCP Term License), Standard, 4,775mAh Standard Battery, Global

CT47 Android - 5G WWAN - S0703 - 6GB RAM / 128GB Flash

CT47-X1N-37D1E0G

CT47, 5G WWAN, 5.5 inch Display, Wi-Fi 6E 802.11 a/b/g/n/ac/d/h/i/r/k/v/w/mc/ax, 2x2 MU-MIMO, BT5.2 & 2nd BLE, 6GB RAM/128GB Flash, S0703 Standard Range, 13MP Rear Camera / 8MP Front Camera, Fingerprint Sensor, Android (GMS), Device Client Pack (DCP) Pre-Loaded (1 Year DCP Term License), 1 x Nano SIM & 1 x eSIM, Standard, 4,775mAh Standard Battery, Global

CT47 Android - Wi-Fi Only - S0703 - 6GB RAM / 128GB Flash

CT47-X0N-37D100G

CT47, WLAN, 5.5 inch Display, Wi-Fi 6E 802.11 a/b/g/n/ac/d/h/i/r/k/v/w/mc/ax, 2x2 MU-MIMO, BT5.2 & 2nd BLE, 6GB RAM/128GB Flash, S0703 Standard Range, 13MP Rear Camera / 8MP Front Camera, Fingerprint Sensor, Android (GMS), Device Client Pack (DCP) Pre-Loaded (1 Year DCP Term License), Standard, 4,775mAh Standard Battery, Global

CT47 – N6803 FlexRange Near/Far Range

Included in the box:

- CT47 Mobile Computer
- Battery (CT4X-BTSC-001)
- USB Type C cable
- Hand strap
- SIM/SD Card Cover Screw

(Stylus is NOT included, but available to order separately as an accessory)



N6803 FlexRange™



CT47 Android - 5G WWAN - N6803 - 8GB RAM/ 128GB Flash

CT47-X1N-58D1EOG

CT47, 5G WWAN, 5.5 inch Display, Wi-Fi 6E 802.11 a/b/g/n/ac/d/h/i/tr/k/v/w/mc/ax, 2x2 MU-MIMO, BT5.2 & 2nd BLE, 8GB RAM/128GB Flash, N6803 FlexRange, 13MP Rear Camera / 8MP Front Camera, Fingerprint Sensor, Android (GMS), Device Client Pack (DCP) Pre-Loaded (1 Year DCP Term License), 1 x Nano SIM & 1 x eSIM, Standard, 4,775mAh Standard Battery, Global

CT47 Android - Wi-Fi Only - N6803 - 8GB RAM/ 128GB Flash

CT47-X0N-58D1OOG

CT47, WLAN, 5.5 inch Display, Wi-Fi 6E 802.11 a/b/g/n/ac/d/h/i/tr/k/v/w/mc/ax, 2x2 MU-MIMO, BT5.2 & 2nd BLE, 8GB RAM/128GB Flash, N6803 FlexRange, 13MP Rear Camera / 8MP Front Camera, Fingerprint Sensor, Android (GMS), Device Client Pack (DCP) Pre-Loaded (1 Year DCP Term License), Standard, 4,775mAh Standard Battery, Global

CT47 Android - 5G WWAN - N6803 - 6GB RAM/ 128GB Flash

CT47-X1N-38D1EOG

CT47, 5G WWAN, 5.5 inch Display, Wi-Fi 6E 802.11 a/b/g/n/ac/d/h/i/tr/k/v/w/mc/ax, 2x2 MU-MIMO, BT5.2 & 2nd BLE, 6GB RAM/128GB Flash, N6803 FlexRange, 13MP Rear Camera / 8MP Front Camera, Fingerprint Sensor, Android (GMS), Device Client Pack (DCP) Pre-Loaded (1 Year DCP Term License), 1 x Nano SIM & 1 x eSIM, Standard, 4,775mAh Standard Battery, Global

CT47 Android - Wi-Fi Only - N6803 - 6GB RAM/ 128GB Flash

CT47-X0N-38D1OOG

CT47, WLAN, 5.5 inch Display, Wi-Fi 6E 802.11 a/b/g/n/ac/d/h/i/tr/k/v/w/mc/ax, 2x2 MU-MIMO, BT5.2 & 2nd BLE, 6GB RAM/128GB Flash, N6803 FlexRange, 13MP Rear Camera / 8MP Front Camera, Fingerprint Sensor, Android (GMS), Device Client Pack (DCP) Pre-Loaded (1 Year DCP Term License), Standard, 4,775mAh Standard Battery, Global

CT47 – S0803 FlexRange XLR Near/Extra Long

Included in the box:

- CT47 Mobile Computer
- Battery (CT4X-BTSC-001)
- USB Type C cable
- Hand strap
- SIM/SD Card Cover Screw

(Stylus is NOT included, but available to order separately as an accessory)



S0803 FlexRange™ XLR



CT47 Android - 5G WWAN - S0803 - 8GB RAM / 128GB Flash

CT47-X1N-5ED1E0G

CT47, 5G WWAN, 5.5 inch Display, Wi-Fi 6E 802.11 a/b/g/n/ac/d/h/i/r/k/v/w/mc/ax, 2x2 MU-MIMO, BT5.2 & 2nd BLE, 8GB RAM/128GB Flash, S0803 FlexRange XLR, 13MP Rear Camera / 8MP Front Camera, Fingerprint Sensor, Android (GMS), Device Client Pack (DCP) Pre-Loaded (1 Year DCP Term License), 1 x Nano SIM & 1 x eSIM, Standard, 4,775mAh Standard Battery, Global

CT47 Android - Wi-Fi Only - S0803 - 8GB RAM / 128GB Flash

CT47-X0N-5ED100G

CT47, WLAN, 5.5 inch Display, Wi-Fi 6E 802.11 a/b/g/n/ac/d/h/i/r/k/v/w/mc/ax, 2x2 MU-MIMO, BT5.2 & 2nd BLE, 8GB RAM/128GB Flash, S0803 FlexRange XLR, 13MP Rear Camera / 8MP Front Camera, Fingerprint Sensor, Android (GMS), Device Client Pack (DCP) Pre-Loaded (1 Year DCP Term License), Standard, 4,775mAh Standard Battery, Global

CT47 Android - 5G WWAN - S0803 - 6GB RAM / 128GB Flash

CT47-X1N-3ED1E0G

CT47, 5G WWAN, 5.5 inch Display, Wi-Fi 6E 802.11 a/b/g/n/ac/d/h/i/r/k/v/w/mc/ax, 2x2 MU-MIMO, BT5.2 & 2nd BLE, 6GB RAM/128GB Flash, S0803 FlexRange XLR, 13MP Rear Camera / 8MP Front Camera, Fingerprint Sensor, Android (GMS), Device Client Pack (DCP) Pre-Loaded (1 Year DCP Term License), 1 x Nano SIM & 1 x eSIM, Standard, 4,775mAh Standard Battery, Global

CT47 Android - Wi-Fi Only - S0803 - 6GB RAM / 128GB Flash

CT47-X0N-3ED100G

CT47, WLAN, 5.5 inch Display, Wi-Fi 6E 802.11 a/b/g/n/ac/d/h/i/r/k/v/w/mc/ax, 2x2 MU-MIMO, BT5.2 & 2nd BLE, 6GB RAM/128GB Flash, S0803 FlexRange XLR, 13MP Rear Camera / 8MP Front Camera, Fingerprint Sensor, Android (GMS), Device Client Pack (DCP) Pre-Loaded (1 Year DCP Term License), Standard, 4,775mAh Standard Battery, Global

CT47 – S0803 FlexRange XLR Near/Extra Long

Non-Incendive / ATEX / IEC Ex

Included in the box:

- CT47 Mobile Computer
- Battery (CT4X-BTSC-001)
- USB Type C cable
- Hand strap
- SIM/SD Card Cover Screw

(Stylus is NOT included, but available to order separately as an accessory)



S0803 FlexRange™ XLR



CT47Android - 5G WWAN - S0803 - 8GB RAM / 128GB Flash

CT47-X1N-5ED1E1G

CT47, 5G WWAN, 5.5 inch Display, Wi-Fi 6E 802.11 a/b/g/n/ac/d/h/i/r/k/v/w/mc/ax, 2x2 MU-MIMO, BT5.2 & 2nd BLE, 8GB RAM/128GB Flash, S0803 FlexRange XLR, 13MP Rear Camera / 8MP Front Camera, Fingerprint Sensor, Android (GMS), Device Client Pack (DCP) Pre-Loaded (1 Year DCP Term License), 1 x Nano SIM & 1 x eSIM, Non-Incendive (NI) / ATEX / IEC Ex, 4,775mAh NI/ATEX/IECEx Battery, Global



CT47 – Device Client Pack (pre-loaded)

Device Client Pack



Launcher - gives the customer total control over which apps can be run on the device.



BasicTE Android device Terminal Emulation is a simplified alternative for those not yet ready to upgrade to SmartTE.



Enterprise Browser provides corporations the ability to run standard web applications from a controlled environment.

Order Separately



SmartTE Terminal Emulator



Terminal Emulator – Full featured SmartTE allows legacy green screen apps to be transformed to the look and feel of native apps. These clients are single session Honeywell TE Licensing. They can also utilize traditional single or multi-session StayLinked Licenses.

SmartTE is Pre-Loaded, but requires license SMARTTE-001 to be purchased separately.

PART NUMBER DESCRIPTION

PART NUMBER	DESCRIPTION
SMARTTE-001	SmartTE Single path initial license. Includes 1 Year maintenance.
SMARTTE-SFT3	SMARTTE – 3 Year Software Maintenance
SMARTTE-SFT5	SMARTTE – 5 Year Software Maintenance
SMARTTE-SND-SFT1	SMARTTE - High availability secondary backup or development server, includes 1 Year maintenance. Not for primary server. Purchase one per device.

PART NUMBER DESCRIPTION

DCP-001	Device Client Pack Perpetual License (DCP) includes 1 Year Software Maintenance. License covers Launcher, Enterprise Browser, BasicTE, and MobilityWeb SDK. Purchase additional years of Software Maintenance DCP-SFT1, DCP-SFT2, DCP-SFT3, DCP-SFT4 or DCP-SFT5 prior to maintenance expiring. Perpetual license provides continuous access to the software, but includes only one year of maintenance for updates and patches
DCP-SFT1	Device Client Pack - 1 Year Term + Maintenance (License covers Launcher, Enterprise Browser, BasicTE, and Mobility Web SDK)
DCP-SFT2	Device Client Pack - 2 Year Term + Maintenance (License covers Launcher, Enterprise Browser, BasicTE, and Mobility Web SDK)
DCP-SFT3	Device Client Pack - 3 Year Term + Maintenance (License covers Launcher, Enterprise Browser, BasicTE, and Mobility Web SDK)
DCP-SFT4	Device Client Pack - 4 Year Term + Maintenance (License covers Launcher, Enterprise Browser, BasicTE, and Mobility Web SDK)
DCP-SFT5	Device Client Pack - 5 Year Term + Maintenance (License covers Launcher, Enterprise Browser, BasicTE, and Mobility Web SDK)

Contact **mobit** for more info:

- DE/EN/IT: **+41 (0)44 800 16 30**, CH-8306 Brüttsellen
- FR: **+41 (0)21 651 98 98**, CH-1020 Renens
- E-mail: info@mobit.ch
- Contact form on www.mobit.ch

Honeywell CT47 – Protective Boot



PART NUMBER	DESCRIPTION
1 CT47-PB-1	CT47 Protective Boot

Honeywell CT47 – Scan Handle (booted)



Stylus



Side View



Rear View

PART NUMBER	DESCRIPTION
1	CT47 universal scan handle to be used with CT47 with Protective Boot (includes CT47-PB-1) Compatible for use with Protective Boot Home Base and Charge Base without removal.
	CT40-HB-UVB-0 Protective Boot Home Base
	CT40-EB-UVB-0 Protective Boot Ethernet Home Base
	CT40-DB-UVB-0 Protective Boot Display Base
	CT40-CB-PB-0 Protective Boot Quad Charge Base
	CT40-NB-PB-0 Protective Boot Quad Net Base
	CT40-CB-UVB-0 Protective Boot Quad Charge Base
	CT40-NB-UVB-0 Protective Boot Quad Net Base



Honeywell CT47 – Scan Handle (no boot)



Stylus



Side View



Rear View

PART NUMBER	DESCRIPTION
1	CT45-SH-UVN
	CT45, CT45 XP and CT47 universal scan handle to be used with CT45/CT45 XP/ CT47 without protective boot Compatible for use with Home Base and Charge Base without removal.
	CT40-HB-0 / CT40-HB-UVN-0 Home Base
	CT40-EB-0 / CT40-EB-UVN-0 Ethernet Home Base
	CT40-DB-0 / CT40-DB-UVN-0 Display Base
	CT40-CB-CNV-0 / CT40-CB-UVN-0 Quad Charge Base
	CT40-NB-CNV-0 / CT40-NB-UVN-0 Quad Net Base



Honeywell CT47 – Miscellaneous Accessories



PART NUMBER	DESCRIPTION
CT47-HS-3PK	CT47 HAND STRAP, pack of 3



Note: Stylus is not to be used with screen protector

PART NUMBER	DESCRIPTION
213-048-001	Pack of 5 CT40 / CT50 / CT60 replacement styluses.
8754-871600-20	Pack of 10 CT40 / CT50 / CT60 replacement styluses.



PART NUMBER	DESCRIPTION
CT47-SP-1PK	CT47 Screen Protector, 1 Pack



PART NUMBER	DESCRIPTION
CT45-HS-FM	CT45 HAND STRAP for Field Mobility 3 pieces per pack. Larger handstrap for field mobility workers with big hands or those who wear gloves. Compatible with Vehicle Docks.



PART NUMBER	DESCRIPTION
CT40-STL-1PKC	CT40 and CT45 Stylus for use with or without screen protectors. Pack of 1.



PART NUMBER	DESCRIPTION
825-239-001	HOLSTER, SCAN HANDLE, CT4X, CT50, CT60 and CT60 XP

Honeywell CT47 – Batteries



CT47
CT47-xxx-xxxxx0x

CT47 Wireless Battery
CT47-xxx-xxxxx0x

CT47 NI / ATEX / IEC Ex
CT47-xxx-xxxxx1x

PART NUMBER	DESCRIPTION
1 CT4X-BTSC-001	CT45 / CT47 Standard Battery Pack, 4775mAh
2 CT4X-BTWC-001	CT45 / CT47 Wireless Battery Pack, 4680mAh
3 CT4X-BTSC-002	CT47 NI / ATEX / IEC Ex Battery Pack, 4775mAh



Honeywell CT47 – Miscellaneous Accessories



PART NUMBER **DESCRIPTION**

CT40-UCP-N CT40 Non-Booted universal cup, to be used for CT40 without protective boot

PART NUMBER **DESCRIPTION**

CT40-UCP-B CT40 Booted universal cup, to be used for CT40 with protective boot (CT45-PB-1)



PART NUMBER **DESCRIPTION**

CT45-VD-IST CT45 Vehicle dock plastic insert, can be used along with CT40-VD-CNV and CT45-VD-CNV



Batteries not included.

PART NUMBER **DESCRIPTION**

CT45-BAT-CUP CT45/CT40 Universal Battery Cup
Compatible CT45-5CB-UVN-BAT-0, CT45-5CB-UVB-BAT-0 and CT4X-QBC-1BAY-0

Contact **mobit** for more info:

- DE/EN/IT: **+41 (0)44 800 16 30**, CH-8306 Brüttisellen
- FR: **+41 (0)21 651 98 98**, CH-1020 Renens
- E-mail: info@mobit.ch
- Contact form on www.mobit.ch

Honeywell CT47 – Desktop Communications

Option 1 – Portable – Non-Booted or Booted

USB Communication to PC/ Mac OR Snap-On Charging.

CT47 Non-Booted **CT47 Booted CT47-PB-1**

CT45-SN-IST Adapter

1

2

PART NUMBER	DESCRIPTION
1	CT45/SN-CNV CT45/CT45XP/CT47 Booted and Non-Booted Snap On adaptor. Provides tethered USB client connectivity. Compatible with hand strap, battery pack, and scan handle. Charges mobile computer battery in four hours or less. Kit includes snap-on adapter with convertible adaptor (CT45-SN-IST).
2	50136024-001 KIT,5V/2A PS,5 PLUGS PACKED, ROW Includes US,JK,AU,EU,IN adapters

Option 2 – Fixed with Universal Cup

USB and optional Ethernet Communication & Single Battery Charger.

CT47 Non-Booted **CT47 Booted CT47-PB-1**

CT40-HB-UVN-0 Home Base **CT40-EB-UVN-0 eHome Base**
CT40-HB-UVB-0 Home Base **CT40-EB-UVB-0 eHome Base**

Rear View

1A **1B**

2

don't forget:
102651 (mobit.ch)
 CH Power Cable
 "Standard"
 (T12-C13, 3-pin,
 black, 2m)

PART NUMBER	DESCRIPTION
1A	CT40-HB-UVN-0 Non-Booted HomeBase - Kit includes (CT40-UCP-N), Dock & Power Supply. No Power Cord
OR	CT40-EB-UVN-0 Non-Booted eHomeBase - Ethernet Kit includes (CT40-UCP-N), Dock & Power Supply. No Power Cord
1B	CT40-HB-UVB-0 Booted HomeBase - Kit includes (CT40-UCP-B), Dock & Power Supply. No Power Cord
OR	CT40-EB-UVB-0 Booted eHomeBase - Ethernet Kit includes (CT40-UCP-B), Dock & Power Supply. No Power Cord
2	321-576-004 Cable Assembly - USB Type A to Type B

Honeywell CT47 – Desktop Communications

Option 3 – USB Type C On-The-Go (OTG) Desktop

USB C Communication to PC/ Mac OR Charging.



PART NUMBER	DESCRIPTION
1	CBL-500-120-S00-05 USB type A to type C, 1.2 m (3.9 ft)
2	50136024-001 KT,5V/2A PS,5 PLUGS PACKED, ROW Includes US,UK,AU,EU,IN adapters

Option 4 – USB Type C On-The-Go (OTG) Vehicle

USB C Communication to Vehicle OR Charging.



PART NUMBER	DESCRIPTION
1A	CBL-500-120-S00-05 USB type A to type C, 1.2 m (3.9 ft)
1B	CT45-SN-CNV CT45 and CT45XP Booted and Non-Booted Snap On adaptor. Provides tethered USB client connectivity. Compatible with hand strap, battery pack, and scan handle. Charges mobile computer battery in four hours or less. Kit includes snap-on adaptor with convertible adaptor (CT45-SN-IST).
2	CT45-CIGR-1 Charging CT45, CT45XP, CT40 and CT40XP configurations on vehicle. Quick Charge 3.0 compliant. Requires CT45 USB adapter (CT45-SN-CNV) or USB cable (CBL-500-120-S00-05) to be ordered separately. (Converts 12 V/24 V cigarette lighter port to USB-type-A power adapter for snap-on use in a vehicle)

Honeywell CT47 – Desktop Communications

Option 5 - Display Base with Universal Cup

Connect USB peripherals (keyboard, mouse) and External Monitor via HDMI.



Contact **mobit** for more info:

- DE/EN/IT: **+41 (0)44 800 16 30**, CH-8306 Brüttisellen
- FR: **+41 (0)21 651 98 98**, CH-1020 Renens
- E-mail: **info@mobit.ch**
- Contact form on **www.mobit.ch**

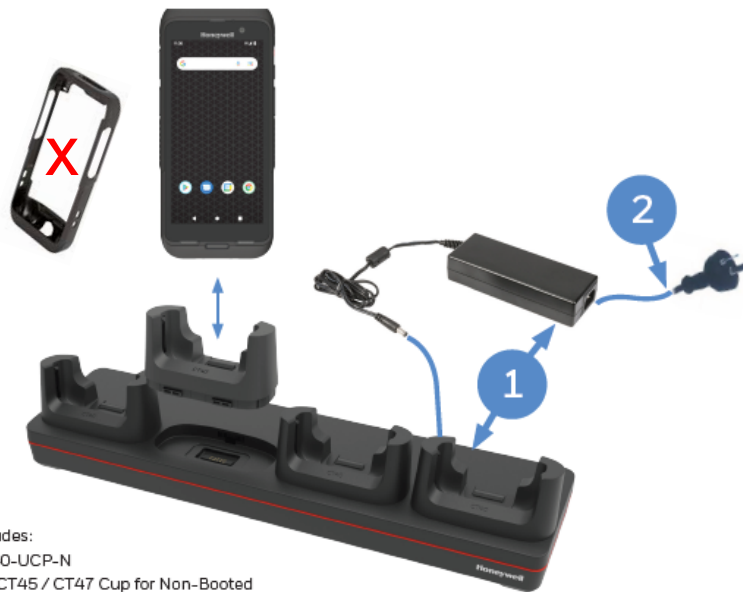
don't forget:
102651 (mobit.ch)
 CH Power Cable
 "Standard"
(T12-C13, 3-pin, black, 2m)

PART NUMBER	DESCRIPTION
1A	CT40-DB-UVN-0 Non-Booted Display Dock - Kit includes (CT40-UCP-N), Display Base & Power Supply, No Power Cord
1B	CT40-DB-UVB-0 Booted Display Dock - Kit includes (CT40-UCP-B), Display Base & Power Supply, No Power Cord

Honeywell CT47 – Charging & Communication

Option 1 – Non-Booted Quad Charger with Universal Cup

Chargebase – Quad Dock Charge Only
 Netbase – Quad Dock with Ethernet
 Not Compatible with CT47-PB-1 Protective Boot



Kit Includes:
 4 x CT40-UCP-N
 CT40 / CT45 / CT47 Cup for Non-Booted

Option 2 – Booted Quad Charger with Universal Cup

Chargebase – Quad Dock Charge Only
 Netbase – Quad Dock with Ethernet
 Compatible with CT47-PB-1 Protective Boot



Kit Includes:
 4 x CT40-UCP-B
 CT40 / CT45 / CT47 Cup for Booted

don't forget:
102651 (mobit.ch)
 CH Power Cable
 "Standard"
 (T12-C13, 3-pin,
 black, 2m)

PART NUMBER	DESCRIPTION
1	CT40-CB-UVN-0 Non-Booted Chargebase - Kit includes Dock and Power Supply
OR	CT40-NB-UVN-0 Non-Booted Netbase - For Ethernet comms, Kit includes Dock and Power Supply

PART NUMBER	DESCRIPTION
1	CT40-CB-LVB-0 Booted Chargebase - Kit includes Dock and Power Supply
OR	CT40-NB-LVB-0 Booted Netbase - For Ethernet comms, Kit includes Dock and Power Supply

Honeywell CT47 – Charging & Communication

Option 3 - Non-Booted 5-Bay Charger with Battery Cup

Chargebase – Quad Dock Charge Only (4 terminals) and Quad Battery Charger (4 Batteries)
Not Compatible with CT47-PB-1 Protective Boot
Compatible with Scan Handle



Kit Includes:
4 x CT40-UCP-N
CT40 / CT45 / CT47 Cup for Non-Booted

don't forget:
102690 (mobit.ch)
CH Power Cable
"Mickey Mouse"
(T12-C5, 3-pin,
black, 2m)

Option 4 - Booted 5-Bay Charger with Battery Cup

Chargebase – Quad Dock Charge Only (4 terminals) and Quad Battery Charger (4 Batteries)
Compatible with CT47-PB-1 Protective Boot
Compatible with Scan Handle



Kit Includes:
4 x CT40-UCP-B
CT40 / CT45 / CT47 Cup for Booted

don't forget:
102690 (mobit.ch)
CH Power Cable
"Mickey Mouse"
(T12-C5, 3-pin,
black, 2m)

PART NUMBER DESCRIPTION

1	CT45-5CB-UVN-BAT-0	CT45 Non-Booted 5 bay Universal Dock, charge up to 4 pieces of CT45/CT40/CT45XP/CT40XP/CT47 and 4 pieces of CT4x batteries. Kit includes 5 bay Universal Dock and Power Adaptor. IEC C5 Power cord must be ordered separately.
---	--------------------	--

PART NUMBER DESCRIPTION

1	CT45-5CB-UVB-BAT-0	CT45 Booted 5 bay Universal Dock, charge up to 4 pieces of CT45/CT40/CT45XP/CT40XP/CT47 and 4 pieces of CT4x batteries. Kit includes 5 bay Universal Dock and Power Adaptor. IEC C5 Power cord must be ordered separately.
---	--------------------	--

Honeywell CT47 – Charging & Communication

Option 5 - Non-Booted 5-Bay Charger with Universal Cups

Chargebase – 5-Bay Dock Charge Only (5 terminals)
 Not Compatible with CT47-PB-1 Protective Boot
 Compatible with Scan Handle



Top View with Scan Handle installed



Kit Includes:
 4 x CT40-UCP-N
 CT40 / CT45 / CT47 Cup for Non-Booted

don't forget:
102690 (mobit.ch)
 CH Power Cable
 "Mickey Mouse"
 (T12-C5, 3-pin,
 black, 2m)

Option 6 - Booted 5-Bay Charger with Universal Cups

Chargebase – 5-Bay Dock Charge Only (5 terminals)
 Compatible with CT47-PB-1 Protective Boot
 Compatible with Scan Handle



Top View with Scan Handle installed



Kit Includes:
 4 x CT40-UCP-B
 CT40 / CT45 / CT47 Cup for Booted

don't forget:
102690 (mobit.ch)
 CH Power Cable
 "Mickey Mouse"
 (T12-C5, 3-pin,
 black, 2m)

PART NUMBER **DESCRIPTION**

1	CT45-5CB-UVN-0	CT45 Non-Booted 5 bay Universal Dock, charge up to 5 pieces of CT45/CT40/CT45XP/CT40XP or CT47. Kit includes 5 bay Universal Dock and Power Adaptor. IEC C5 Power cord must be ordered separately.
---	----------------	--

PART NUMBER **DESCRIPTION**

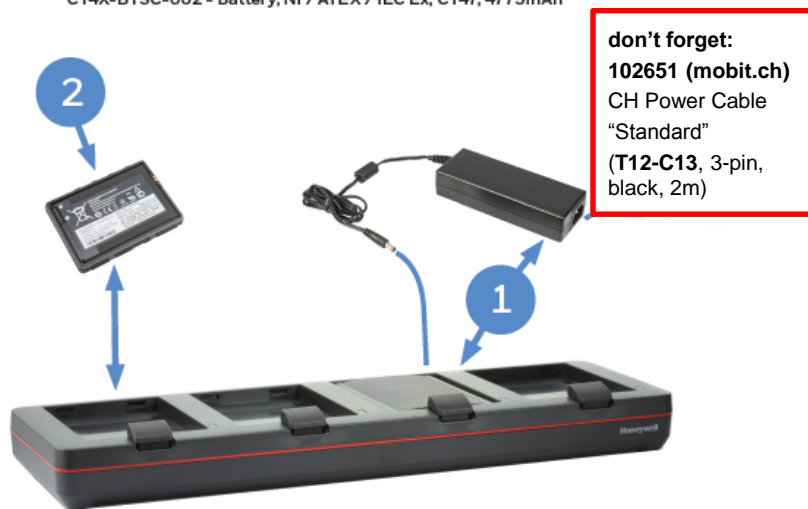
1	CT45-5CB-UVB-0	CT45 Booted 5 bay Universal Dock, charge up to 5 pieces of CT45/CT40/CT45XP/CT40XP or CT47. Kit includes 5 bay Universal Dock and Power Adaptor. IEC C5 Power cord must be ordered separately.
---	----------------	--

Honeywell CT47 – Charging & Communication

Option 7 – Quad Battery Charger

Charge up to 4 batteries simultaneously

Supports Batteries: 318-055-010 - Battery, Standard, CT40 Gen 1 (4090mAh)
 318-055-011 - Battery, Standard, CT40 Gen 1 (4040mAh)
 318-055-014 - Battery, Standard, CT40 Gen 2 (4090mAh)
 318-055-015 - Battery, Standard, CT40 Gen 2 (4020mAh)
 318-055-017 - Battery, Standard, CT40 Healthcare (4020mAh)
 318-055-067 - Battery, Standard, CT40 Gen 2 / XP, CT45 / XP (4020mAh)
 318-055-D67 - Battery, Standard, CT40 DRH / XP (4020mAh)
 318-055-H67 - Battery, Standard, CT40 Healthcare / XP (4020mAh)
 CT4X-BTSC-001 - Battery, Standard, CT45 / CT47, 4775mAh
 CT4X-BTWC-001 - Battery, Wireless, CT45 / CT47, 4680mAh
 CT4X-BTSC-002 - Battery, NI / ATEX / IEC Ex, CT47, 4775mAh



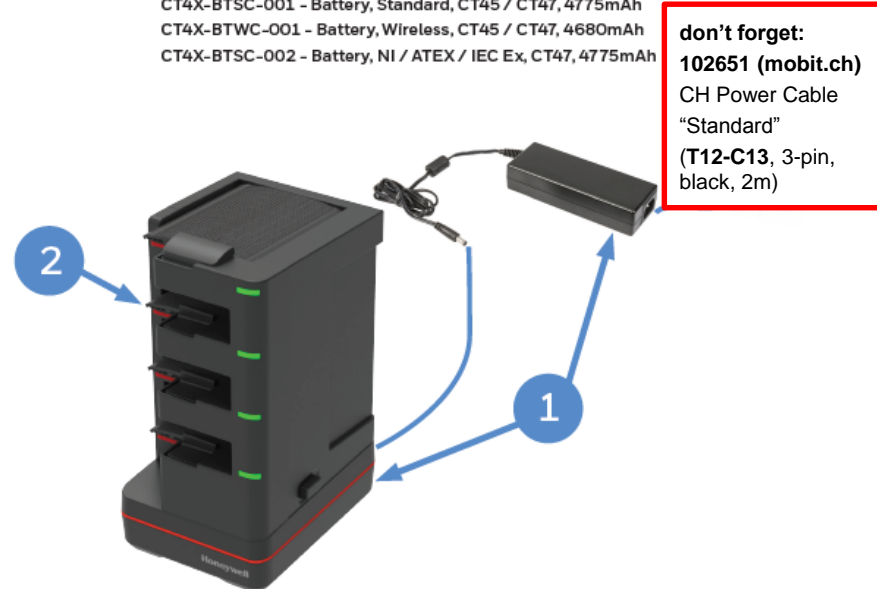
Batteries not included.

PART NUMBER	DESCRIPTION
1	CT40-QBC-0 Quad Battery Charger - Kit includes Dock and Power Supply
2	** Spare Battery - See Page 34 for Battery Selection

Option 8 – 1-Bay Quad Battery Charger with Universal Cup

Charge up to 4 batteries simultaneously

Supports Batteries: 318-055-010 - Battery, Standard, CT40 Gen 1 (4090mAh)
 318-055-011 - Battery, Standard, CT40 Gen 1 (4040mAh)
 318-055-014 - Battery, Standard, CT40 Gen 2 (4090mAh)
 318-055-015 - Battery, Standard, CT40 Gen 2 (4020mAh)
 318-055-017 - Battery, Standard, CT40 Healthcare (4020mAh)
 318-055-067 - Battery, Standard, CT40 Gen 2 / XP, CT45 / XP (4020mAh)
 318-055-D67 - Battery, Standard, CT40 DRH / XP (4020mAh)
 318-055-H67 - Battery, Standard, CT40 Healthcare / XP (4020mAh)
 CT4X-BTSC-001 - Battery, Standard, CT45 / CT47, 4775mAh
 CT4X-BTWC-001 - Battery, Wireless, CT45 / CT47, 4680mAh
 CT4X-BTSC-002 - Battery, NI / ATEX / IEC Ex, CT47, 4775mAh



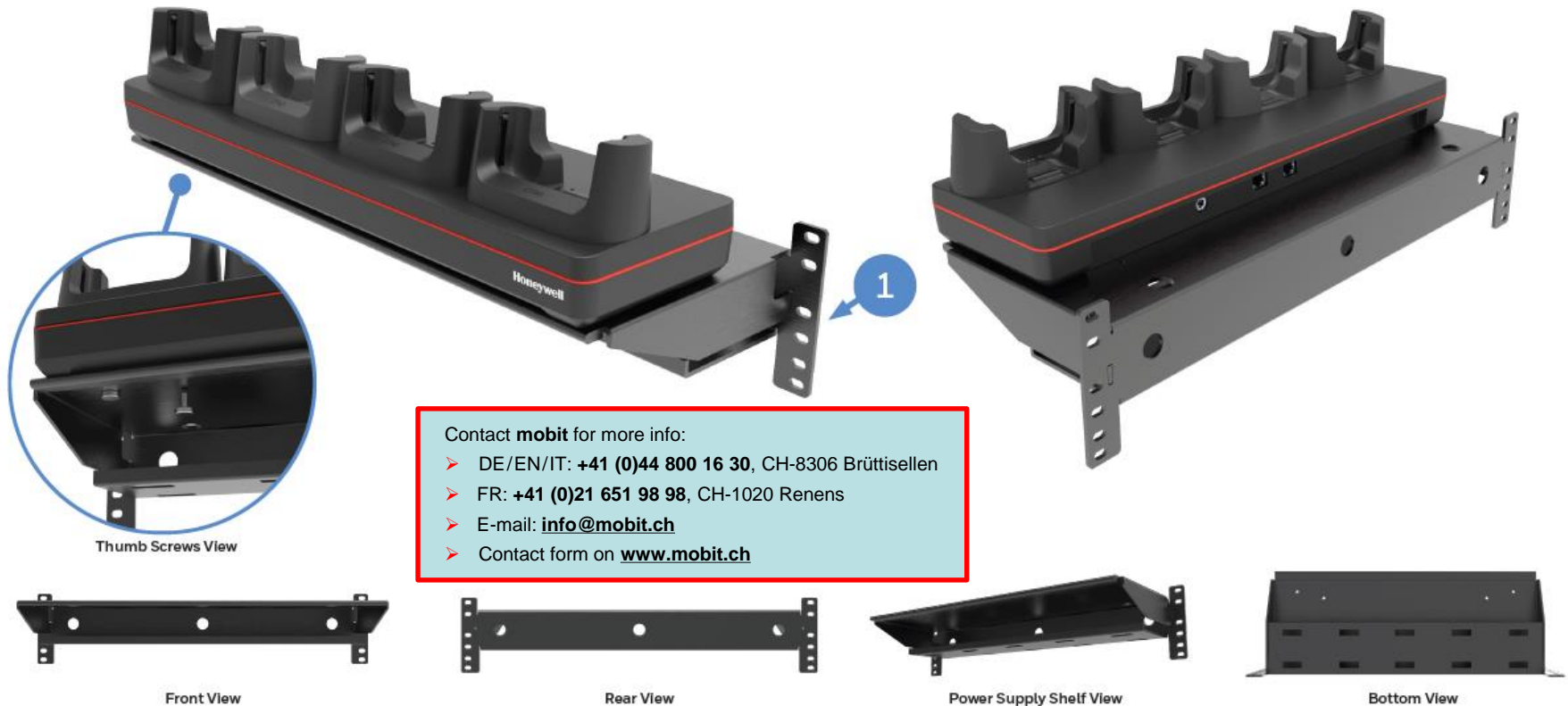
Batteries not included.

PART NUMBER	DESCRIPTION
1	CT4X-QBC-1BAY-0 1-Bay Quad Battery Charger - Kit includes Dock and Power Supply
2	** Spare Battery - See Page 34 for Battery Selection

Honeywell CT47 – Charging & Communication

Rack / Wall Mount Bracket

The Rack/Wall Mount Bracket has been optimized to work on a standard 19-inch (48cm) rack, as well as mounting directly onto a wall. Compatible with all 4-bay chargers.



Contact **mobit** for more info:
➤ DE/EN/IT: **+41 (0)44 800 16 30**, CH-8306 Brütisellen
➤ FR: **+41 (0)21 651 98 98**, CH-1020 Renens
➤ E-mail: info@mobit.ch
➤ Contact form on www.mobit.ch

PART NUMBER	DESCRIPTION
1 CB-BK-01	4 Bay Charger Bracket, Rack / Wall Mount (includes 4 x 50180100-001 Thumb Screws M3.5x10 to securely attach the 4-bay dock to the bracket)

Honeywell CT47 – Vehicle Install

Option 1 – Portable/ Sub Contractor Install

Simple Vehicle Charging, portable between vehicles.

Compatible with CT47 with or without CT47-PB-1 Protective Boot Installed.



PART NUMBER	DESCRIPTION
1 CT45-SN-CNV	CT45/CT45XP/CT47 Booted and Non-Booted Snap On adaptor. Provides tethered USB client connectivity. Compatible with hand strap, battery pack, and scan handle. Charges mobile computer battery in four hours or less. Kit includes snap-on adaptor with convertible adaptor (CT45-SN-IST).
2 CT45-CIGR-1	Charging CT45, CT45XP, CT40 and CT40XP configurations on vehicle. Quick Charge 3.0 compliant. Requires CT45 USB adapter (CT45-SN-CNV) or USB cable (CBL-500-120-S00-05) to be ordered separately. (Converts 12 V/24 V cigarette lighter port to USB type-A power adapter for snap-on use in a vehicle)

Option 2 – Portable/ Sub Contractor Install

Windscreen Suction Cup Mount, portable between vehicles.

Compatible with CT47 with or without CT47-PB-1 Protective Boot Installed.



PART NUMBER	DESCRIPTION
1 CT45-VD-CNV	CT45/ CT45 XP/ CT47 Booted and Non-Booted Vehicle Dock. For charging CT45/XP with or without a convertible adaptor, compatible with hand strap. NFC tag integrated for seamless pairing with mobile computer. Kit includes vehicle dock (CT40-VD-CNV) with convertible adaptor (CT45-VD-IST).
2 RAM-B-166-202U	Suction Cup Mount Kit
3 50138169-001	Cigarette Lighter Power Adapter Cable

Honeywell CT47 – Vehicle Install

Option 3 - Fixed Vehicle Install with Direct Connection to Vehicle Battery

Best used when the vehicle input voltage varies, 10- 30V.

Compatible with CT47 with or without CT47-PB-1 Protective Boot installed.



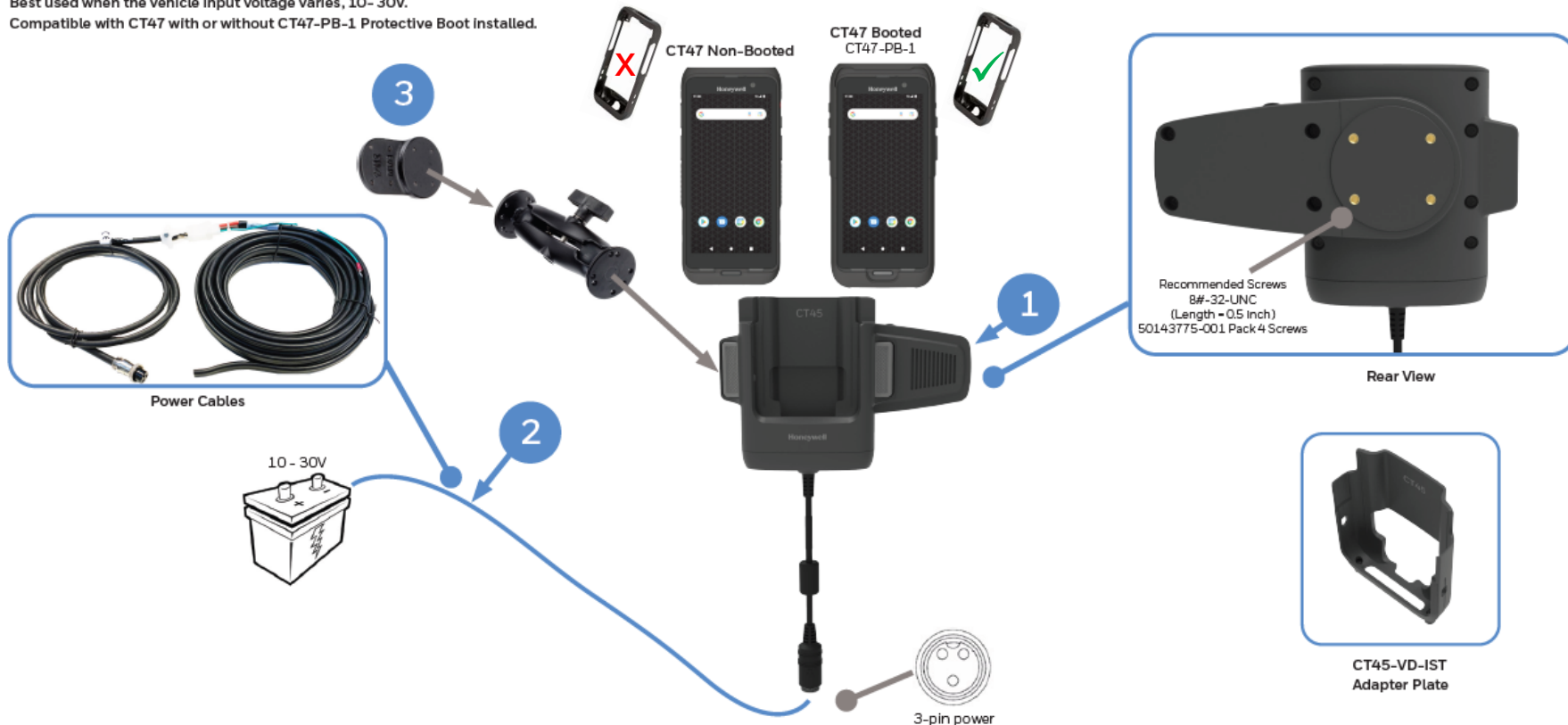
PART NUMBER	DESCRIPTION
1	CT45-VD-CNV CT45/ CT45 XP/ CT47 Booted and Non-Booted Vehicle Dock. For charging CT45/XP with or without a convertible adaptor, compatible with hand strap. NFC tag integrated for seamless pairing with mobile computer. Kit includes vehicle dock (CT40-VD-CNV) with convertible adaptor (CT45-VD-IST).
2	203-802-001 Vehicle Dock Installation Kit (Power Option: For connection of Vehicle Dock directly to vehicle battery. Includes power cables and cable mounting hardware)
3	805-611-001 Mounting Kit, V-Dock RoHS

Honeywell CT47 – Vehicle Install

Option 4 - Fixed Vehicle Install with Direct Connection to Vehicle Battery - External Speaker

Best used when the vehicle input voltage varies, 10- 30V.

Compatible with CT47 with or without CT47-PB-1 Protective Boot Installed.



PART NUMBER	DESCRIPTION
1 CT45-VD-CNV-SPK	CT45/ CT45 XP/ CT47 Booted and Non-Booted Vehicle Dock with External Speaker. For charging CT45/XP with or without a convertible adaptor, compatible with hand strap, NFC tag integrated for seamless pairing with mobile computer. Kit includes vehicle dock with convertible adaptor (CT45-VD-IST).
2 203-802-001	Vehicle Dock Installation Kit (Power Option): For connection of Vehicle Dock directly to vehicle battery. Includes power cables and cable mounting hardware)
3 805-611-001	Mounting Kit, V-Dock RoHS

Honeywell CT47 – Vehicle Install

Option 5 - Fixed Vehicle Install with Direct Connection to Vehicle Battery/ Fuse Block

Best used when the vehicle input voltage varies, 10- 30V.

Compatible with CT47 with or without CT47-PB-1 Protective Boot Installed.



PART NUMBER	DESCRIPTION
1	CT45-VD-CNV CT45/ CT45 XP/ CT47 Booted and Non-Booted Vehicle Dock. For charging CT45/XP with or without a convertible adaptor, compatible with hand strap. NFC tag integrated for seamless pairing with mobile computer. Kit includes vehicle dock (CT40-VD-CNV) with convertible adaptor (CT45-VD-IST).
2	226-109-003 72" (182.88 cm) Fuse block Power Cable with spade lugs and 3-pin connector
OR	226-109-004 22" (55.8 cm) Fuse block Power Cable with spade lugs and 3-pin connector
3	805-611-001 Mounting Kit, V-Dock RoHS
OPTIONAL	203-803-001 Vehicle Dock Fuse Block Power Kit RoHS (Provides connection to vehicle fuse block). Requires Power Cable (226-109-003 or 226-109-004).

Honeywell CT47 – Vehicle Install

Option 6 - Fixed Vehicle Install with Direct Connection to Vehicle Battery/ Fuse Block - External Speaker

Best used when the vehicle input voltage varies, 10- 30V.

Compatible with CT47 with or without CT47-PB-1 Protective Boot Installed.



PART NUMBER	DESCRIPTION
1	CT45-VD-CNV-SPK CT45/ CT45 XP/ CT47 Booted and Non-Booted Vehicle Dock with External Speaker. For charging CT45/XP with or without a convertible adaptor, compatible with hand strap. NFC tag integrated for seamless pairing with mobile computer. Kit includes vehicle dock with convertible adaptor (CT45-VD-IST).
2	226-109-003 72" (182.88 cm) Fuse block Power Cable with spade lugs and 3-pin connector
OR	226-109-004 22" (55.8 cm) Fuse block Power Cable with spade lugs and 3-pin connector
3	805-611-001 Mounting Kit, V-Dock RoHS
OPTIONAL	203-803-001 Vehicle Dock Fuse Block Power Kit RoHS (Provides connection to vehicle fuse block). Requires Power Cable (226-109-003 or 226-109-004).

Honeywell CT47 – Vehicle Install

Option 7 – Fixed Vehicle Install with Thor DC/DC Converter

Best used when the vehicle input voltage varies, 9-60V or 50-150V.
Compatible with CT47 with or without CT47-PB-1 Protective Boot Installed.



PART NUMBER	DESCRIPTION
1	CT45-VD-CNV CT45/ CT45 XP/ CT47 Booted and Non-Booted Vehicle Dock. For charging CT45/XP with or without a convertible adaptor, compatible with hand strap. NFC tag integrated for seamless pairing with mobile computer. Kit includes vehicle dock (CT40-VD-CNV) with convertible adaptor (CT45-VD-IST).
2	9000311PWRSPLY DC/DC Converter Kit, 9-60V DC, RoHS (Requires 226-109-003 Wiring Harness)
OR	9000313PWRSPLY DC/DC Converter Kit, 50-150V DC RoHS (Requires 226-109-003 Wiring Harness)
	226-109-003 72" (182.88 cm) Fuse block Power Cable with spade lugs and 3-pin connector
3	805-611-001 Mounting Kit, V-Dock RoHS

Honeywell CT47 – Vehicle Install

Option 8 - Fixed Vehicle Install with Thor DC/DC Converter - External Speaker

Best used when the vehicle input voltage varies, 9-60V or 50-150V.
Compatible with CT47 with or without CT47-PB-1 Protective Boot Installed.



PART NUMBER	DESCRIPTION
1	CT45-VD-CNV-SPK CT45/ CT45 XP/ CT47 Booted and Non-Booted Vehicle Dock with External Speaker. For charging CT45/XP with or without a convertible adaptor, compatible with hand strap. NFC tag integrated for seamless pairing with mobile computer. Kit includes vehicle dock with convertible adaptor (CT45-VD-IST).
2	9000311PWRSPLY DC/DC Converter Kit, 9-60V DC, RoHS (Requires 226-109-003 Wiring Harness)
OR	9000313PWRSPLY DC/DC Converter Kit, 50-150V DC RoHS (Requires 226-109-003 Wiring Harness)
	226-109-003 72" (182.88 cm) Fuse block Power Cable with spade lugs and 3-pin connector
3	805-611-001 Mounting Kit, V-Dock RoHS

Contact **mobit** for more info:

- DE/EN/IT: **+41 (0)44 800 16 30**, CH-8306 Brüttsellen
- FR: **+41 (0)21 651 98 98**, CH-1020 Renens
- E-mail: info@mobit.ch
- Contact form on www.mobit.ch

Honeywell CT47 – Gold Repair Services

Gold Repair Services - 3 Year

The Edge Services Gold Support contract allows flexibility for you to select the right coverage for your organization, including 5-Day Depot Repairs and:

Service Overview

- Repair or replacement (at Honeywell discretion) for damaged components, wear and tear, accidental damage
- Flexibility to add any Add-On Service
- Android Service - includes Android OS Upgrades, Maintenance Releases and Security Patches

PART NUMBER	DESCRIPTION
SVCCT47-SG3N	CT47, Edge Service, GOLD Maintenance Contract, 5 Day Turnaround, 3 Year, New Contract

Add-On Accessory Replacement Service

Provides replacement chargers, docks, charging cables, or scan handles should they be damaged or stop working.

ADD SVCACC-MOB3	AddOn, Edge Service, Accessory Service, Mobility, 3 Year. Service covers docks, charger cradles, scan handles
------------------------	---

Add-On Battery Replacement Service

Provides replacement batteries as needed after a minimum of 18 months post-purchase.

ADD SVCBATTERY-MOB3	AddOn, Edge Service, Battery Service, Mobility, 3 Year, 1 Replacement Battery over life of contract
----------------------------	---

Add-On Device Replacement Service

Replacement devices should a device be damaged beyond repair.

ADD SVCREPLACE-MOB3	AddOn, Edge Service, Device Replacement, Mobility, 3 Year
----------------------------	---

Add-On Image Management Service

Ensures that when a device returns from being repaired, it has all the proper applications loaded back on the device.

ADD SVCIMAGEMGMT-MOB3	AddOn, Edge Service, Image Service, Mobility, 3 Year
------------------------------	--

Add-On Spare Management Service

Manages your spare pool.

ADD SVCSPAREMGMT-MOB3	AddOn, Edge Service, Advanced Exchange, Mobility, 3 Year. Customer owned spare pool, Minimum Purchase required, contact your local Honeywell Service Representative for more information.
------------------------------	---

Add-On 2-Day Turnaround Depot Upgrade

Upgrade your Gold Maintenance Contract from 5-Day to 2-Day turnaround at the repair depot.

ADD SVC2DAYDEPOT-MOB3	AddOn, Edge Service, 2-Day Depot Upgrade, 3-Year Agreement, Requires purchase of a 3 Year Gold Maintenance Contract.
------------------------------	--

MO-REP-HANDL-MDE-3
MO-KONF-SERV-MDE-3

Repair Handling (mobit)
Configuration Service (mobit)

Gold Repair Services - 5 Year

The Edge Services Gold Support contract allows flexibility for you to select the right coverage for your organization, including 5-Day Depot Repairs and:

Service Overview

- Repair or replacement (at Honeywell discretion) for damaged components, wear and tear, accidental damage
- Flexibility to add any Add-On Service
- Android Service - includes Android OS Upgrades, Maintenance Releases and Security Patches

PART NUMBER	DESCRIPTION
SVCCT47-SG5N	CT47, Edge Service, GOLD Maintenance Contract, 5 Day Turnaround, 5 Year, New Contract

Add-On Accessory Replacement Service

Provides replacement chargers, docks, charging cables, or scan handles should they be damaged or stop working.

ADD SVCACC-MOB5	AddOn, Edge Service, Accessory Service, Mobility, 5 Year. Service covers docks, charger cradles, scan handles
------------------------	---

Add-On Battery Replacement Service

Provides replacement batteries as needed after a minimum of 18 months post-purchase.

ADD SVCBATTERY-MOB5	AddOn, Edge Service, Battery Service, Mobility, 5 Year, 2 Replacement Battery over life of contract
----------------------------	---

Add-On Device Replacement Service

Replacement devices should a device be damaged beyond repair.

ADD SVCREPLACE-MOB5	AddOn, Edge Service, Device Replacement, Mobility, 5 Year
----------------------------	---

Add-On Image Management Service

Ensures that when a device returns from being repaired, it has all the proper applications loaded back on the device.

ADD SVCIMAGEMGMT-MOB5	AddOn, Edge Service, Image Service, Mobility, 5 Year
------------------------------	--

Add-On Spare Management Service

Manages your spare pool.

ADD SVCSPAREMGMT-MOB5	AddOn, Edge Service, Advanced Exchange, Mobility, 5 Year. Customer owned spare pool, Minimum Purchase required, contact your local Honeywell Service Representative for more information.
------------------------------	---

Add-On 2-Day Turnaround Depot Upgrade

Upgrade your Gold Maintenance Contract from 5-Day to 2-Day turnaround at the repair depot.

ADD SVC2DAYDEPOT-MOB5	AddOn, Edge Service, 2-Day Depot Upgrade, 5-Year Agreement, Requires purchase of a 5 Year Gold Maintenance Contract.
------------------------------	--

MO-REP-HANDL-MDE-5
MO-KONF-SERV-MDE-5

Repair Handling (mobit)
Configuration Service (mobit)

Honeywell – Replacement Power Supplies



IEC C14

don't forget:
102651 (mobit.ch)
CH Power Cable "Standard"
(T12-C13, 3-pin, black, 2m)

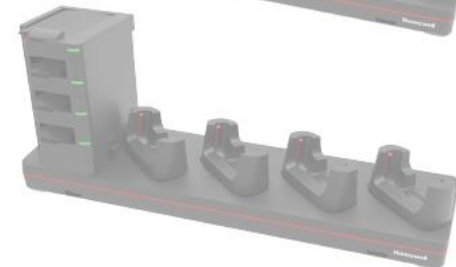
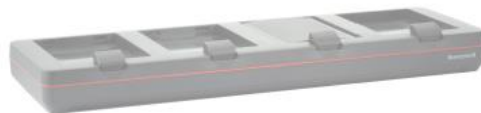
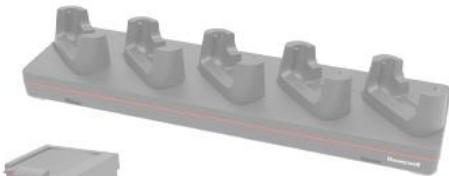
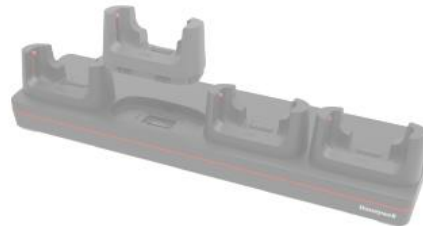
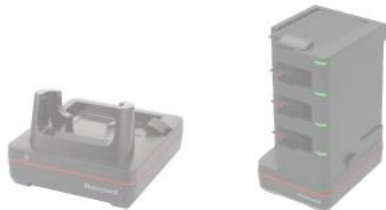


IEC C14

don't forget:
102690 (mobit.ch)
CH Power Cable "Mickey Mouse"
(T12-C5, 3-pin, black, 2m)



IEC C6



PART NUMBER	DESCRIPTION
50121666-001	Power Adapter, 12V 3A, No Power Cord, Compatible with CT40 Homebase / eHomebase / Quad Battery Charger (Requires IEC C13 AC Power Cord)

PART NUMBER	DESCRIPTION
50121667-001	Power Adapter, 12V 7A, No Power Cord, CT40 Quad Chargebase/ Quad Netbase (Requires IEC C13 AC Power Cord)

PART NUMBER	DESCRIPTION
3007-3408-001	Power Supply 12V 8.3A R7B ADS-120QL-12-3 120100E 5-Bay Charge Base (Requires IEC C5 AC Power Cord)

Contact **mobit** for more info:

- > DE/EN/IT: **+41 (0)44 800 16 30**, CH-8306 Brüttisellen
- > FR: **+41 (0)21 651 98 98**, CH-1020 Renens
- > E-mail: **info@mobit.ch**
- > Contact form on **www.mobit.ch**

Honeywell CT47 Mobile Computer

Products, Accessories and Services Guide

Contact **mobit** for more info:

- DE/EN/IT: **+41 (0)44 800 16 30**, CH-8306 Brüttisellen
- FR: **+41 (0)21 651 98 98**, CH-1020 Renens
- E-mail: info@mobit.ch
- Contact form on www.mobit.ch

