

Honeywell CT32 Mobile Computer

Configuration Guide

Contact **mobit** for more info:

- DE/EN/IT: **+41 (0)44 800 16 30**, CH-8306 Brüttisellen
- FR: **+41 (0)21 651 98 98**, CH-1020 Renens
- E-mail: info@mobit.ch
- Contact form on www.mobit.ch



ideal with
mobit m|ES
software
solution



Honeywell CT32 Mobile Computer

CT32 FEATURE OVERVIEW

S0703 Standard Range - Standard Battery

Included In the box:

- CT32 Mobile Computer
- Battery (50172021-001)
- Hand Strap
- USB Type C cable



S0703 Standard Range



CT32 Android - 5G WWAN - S0703 - 8GB RAM/ 128GB Flash

CT32-XIN-57S1FBG

CT32, 5G WWAN, 6.0 inch 2160x1080 Full HD Display, Wi-Fi 6E 802.11 a/b/g/n/ac/d/h/i/r/t/k/v/w/mc/ax, 2x2 MU-MIMO, BT5.3, Near Field Communications (NFC), 1x Nano SIM & 1 x eSIM, 8GB RAM/128GB Flash, S0703 Standard Range, 13MP Rear Camera / 8MP Front Camera, 4,500mAh Standard Battery, IP67, USB 3.1 Type C OTG, Quick Charge 4.0, Android (GMS), Device Client Pack (DCP) Pre-Loaded (1 Year DCP Term License), Standard, Hand Strap, Global

CT32 Android - Wi-Fi Only - S0703 - 8GB RAM/ 128GB Flash

CT32-XON-57S1FBG

CT32, WLAN, 6.0 inch 2160x1080 Full HD Display, Wi-Fi 6E 802.11 a/b/g/n/ac/d/h/i/r/t/k/v/w/mc/ax, 2x2 MU-MIMO, BT5.3, Near Field Communications (NFC), 8GB RAM/128GB Flash, S0703 Standard Range, 13MP Rear Camera / 8MP Front Camera, 4,500mAh Standard Battery, IP67, USB 3.1 Type C OTG, Quick Charge 4.0, Android (GMS), Device Client Pack (DCP) Pre-Loaded (1 Year DCP Term License), Standard, Hand Strap, Global

CT32 Android - 5G WWAN - S0703 - 6GB RAM/ 128GB Flash

CT32-XIN-37S1FBG

CT32, 5G WWAN, 6.0 inch 2160x1080 Full HD Display, Wi-Fi 6E 802.11 a/b/g/n/ac/d/h/i/r/t/k/v/w/mc/ax, 2x2 MU-MIMO, BT5.3, Near Field Communications (NFC), 1x Nano SIM & 1 x eSIM, 6GB RAM/128GB Flash, S0703 Standard Range, 13MP Rear Camera / 8MP Front Camera, 4,500mAh Standard Battery, IP67, USB 3.1 Type C OTG, Quick Charge 4.0, Android (GMS), Device Client Pack (DCP) Pre-Loaded (1 Year DCP Term License), Standard, Hand Strap, Global

CT32 Android - Wi-Fi Only - S0703 - 6GB RAM/ 128GB Flash

CT32-XON-37S1FBG

CT32, WLAN, 6.0 inch 2160x1080 Full HD Display, Wi-Fi 6E 802.11 a/b/g/n/ac/d/h/i/r/t/k/v/w/mc/ax, 2x2 MU-MIMO, BT5.3, Near Field Communications (NFC), 6GB RAM/128GB Flash, S0703 Standard Range, 13MP Rear Camera / 8MP Front Camera, 4,500mAh Standard Battery, IP67, USB 3.1 Type C OTG, Quick Charge 4.0, Android (GMS), Device Client Pack (DCP) Pre-Loaded (1 Year DCP Term License), Standard, Hand Strap, Global

Honeywell CT32 Mobile Computer

CT32 FEATURE OVERVIEW

S0703 Standard Range - Extended Battery

Included In the box:

- CT32 Mobile Computer
- Battery (3016-3479-001)
- Hand Strap
- USB Type C cable



S0703 Standard Range



CT32 Android - 5G WWAN - S0703 - 8GB RAM/ 128GB Flash

CT32-XIN-57E1FBG

CT32, 5G WWAN, 6.0 inch 2160x1080 Full HD Display, Wi-Fi 6E 802.11 a/b/g/n/ac/d/h/i/r/k/v/w/mc/ax, 2x2 MU-MIMO, BT5.3, Near Field Communications (NFC), 1x NanoSIM & 1 x eSIM, 8GB RAM/128GB Flash, S0703 Standard Range, 13MP Rear Camera / 8MP Front Camera, 6,100mAh Extended Battery, IP67, USB 3.1 Type C OTG, Quick Charge 4.0, Android (GMS), Device Client Pack (DCP) Pre-Loaded (1 Year DCP Term License), Standard, Hand Strap, Global

CT32 Android - Wi-Fi Only - S0703 - 8GB RAM/ 128GB Flash

CT32-XON-57E1FBG

CT32, WLAN, 6.0 inch 2160x1080 Full HD Display, Wi-Fi 6E 802.11 a/b/g/n/ac/d/h/i/r/k/v/w/mc/ax, 2x2 MU-MIMO, BT5.3, Near Field Communications (NFC), 8GB RAM/128GB Flash, S0703 Standard Range, 13MP Rear Camera / 8MP Front Camera, 6,100mAh Extended Battery, IP67, USB 3.1 Type C OTG, Quick Charge 4.0, Android (GMS), Device Client Pack (DCP) Pre-Loaded (1 Year DCP Term License), Standard, Hand Strap, Global

Honeywell CT32 Mobile Computer

CT32 FEATURE OVERVIEW

S0803FR FlexRange™ Near/ Far Range - Standard Battery



Included in the box:

- CT32 Mobile Computer
- Battery (50172021-001)
- Hand Strap
- USB Type C cable



CT32 Android - 5G WWAN - S0803 FR - 8GB RAM/ 128GB Flash

CT32-XIN-58S1FBG

CT32, 5G WWAN, 6.0 inch 2160x1080 Full HD Display, Wi-Fi 6E 802.11 a/b/g/n/ac/d/h/i/r/t/k/v/w/mc/ax, 2x2 MU-MIMO, BT5.3, Near Field Communications (NFC), 1x Nano SIM & 1 x eSIM, 8GB RAM/128GB Flash, S0803FR FlexRange Green Aimer Spot, 13MP Rear Camera / 8MP Front Camera, 4,500mAh Standard Battery, IP67, USB 3.1 Type C OTG, Quick Charge 4.0, Android (GMS), Device Client Pack (DCP) Pre-Loaded (1 Year DCP Term License), Standard, Hand Strap, Global

CT32 Android - Wi-Fi Only - S0803 FR - 8GB RAM/ 128GB Flash

CT32-XON-58S1FBG

CT32, WLAN, 6.0 inch 2160x1080 Full HD Display, Wi-Fi 6E 802.11 a/b/g/n/ac/d/h/i/r/t/k/v/w/mc/ax, 2x2 MU-MIMO, BT5.3, Near Field Communications (NFC), 8GB RAM/128GB Flash, S0803FR FlexRange Green Aimer Spot, 13MP Rear Camera / 8MP Front Camera, 4,500mAh Standard Battery, IP67, USB 3.1 Type C OTG, Quick Charge 4.0, Android (GMS), Device Client Pack (DCP) Pre-Loaded (1 Year DCP Term License), Standard, Hand Strap, Global

Honeywell CT32 Mobile Computer

CT32 FEATURE OVERVIEW

S0803FR FlexRange™ Near/ Far Range - Extended Battery



Included in the box:

- CT32 Mobile Computer
- Battery (3016-3479-001)
- Hand Strap
- USB Type C cable



S0803FR FlexRange™



CT32 Android - 5G WWAN - S0803 FR - 8GB RAM/ 128GB Flash

CT32-XIN-58EIFBG

CT32, 5G WWAN, 6.0 inch 2160x1080 Full HD Display, Wi-Fi 6E 802.11 a/b/g/n/ac/d/h/v/r/k/v/w/mc/ax, 2x2 MU-MIMO, BT5.3, Near Field Communications (NFC), 1x Nano SIM & 1 x eSIM, 8GB RAM/128GB Flash, S0803FR FlexRange Green Aimer Spot, 13MP Rear Camera / 8MP Front Camera, 6,100mAh Extended Battery, IP67, USB 3.1 Type C OTG, Quick Charge 4.0, Android (GMS), Device Client Pack (DCP) Pre-Loaded (1 Year DCP Term License), Standard, Hand Strap, Global

CT32 Android - Wi-Fi Only - S0803 FR - 8GB RAM/ 128GB Flash

CT32-XON-58EIFBG

CT32, WLAN, 6.0 inch 2160x1080 Full HD Display, Wi-Fi 6E 802.11 a/b/g/n/ac/d/h/v/r/k/v/w/mc/ax, 2x2 MU-MIMO, BT5.3, Near Field Communications (NFC), 8GB RAM/128GB Flash, S0803FR FlexRange Green Aimer Spot, 13MP Rear Camera / 8MP Front Camera, 6,100mAh Extended Battery, IP67, USB 3.1 Type C OTG, Quick Charge 4.0, Android (GMS), Device Client Pack (DCP) Pre-Loaded (1 Year DCP Term License), Standard, Hand Strap, Global

Honeywell CT32 Mobile Computer

CT32 FEATURE OVERVIEW

No Scanner – Standard Battery

Included in the box:

- CT32 Mobile Computer
- Battery (50172021-001)
- Hand Strap
- USB Type C cable



No Scanner



CT32 Android – 5G WWAN – No Scanner – 8GB RAM/ 128GB Flash

CT32-XIN-50S1FBG

CT32, 5G WWAN, 6.0 inch 2160x1080 Full HD Display, Wi-Fi 6E 802.11 a/b/g/n/ac/d/h/i/r/k/v/w/mc/ax, 2x2 MU-MIMO, BT5.3, Near Field Communications (NFC), 1 x Nano SIM & 1 x eSIM, 8GB RAM/128GB Flash, No Engine, 13MP Rear Camera / 8MP Front Camera, 4,500mAh Standard Battery, IP67, USB 3.1 Type C OTG, Quick Charge 4.0, Android (GMS), Device Client Pack (DCP) Pre-Loaded (1 Year DCP Term License), Standard, Hand Strap, Global

CT32 Android – Wi-Fi Only – No Scanner – 8GB RAM/ 128GB Flash

CT32-XON-50S1FBG

CT32, WLAN, 6.0 inch 2160x1080 Full HD Display, Wi-Fi 6E 802.11 a/b/g/n/ac/d/h/i/r/k/v/w/mc/ax, 2x2 MU-MIMO, BT5.3, Near Field Communications (NFC), 8GB RAM/128GB Flash, No Engine, 13MP Rear Camera / 8MP Front Camera, 4,500mAh Standard Battery, IP67, USB 3.1 Type C OTG, Quick Charge 4.0, Android (GMS), Device Client Pack (DCP) Pre-Loaded (1 Year DCP Term License), Standard, Hand Strap, Global

CT32 Android – 5G WWAN – No Scanner – 6GB RAM/ 128GB Flash

CT32-XIN-30S1FBG

CT32, 5G WWAN, 6.0 inch 2160x1080 Full HD Display, Wi-Fi 6E 802.11 a/b/g/n/ac/d/h/i/r/k/v/w/mc/ax, 2x2 MU-MIMO, BT5.3, Near Field Communications (NFC), 1 x Nano SIM & 1 x eSIM, 6GB RAM/128GB Flash, No Engine, 13MP Rear Camera / 8MP Front Camera, 4,500mAh Standard Battery, IP67, USB 3.1 Type C OTG, Quick Charge 4.0, Android (GMS), Device Client Pack (DCP) Pre-Loaded (1 Year DCP Term License), Standard, Hand Strap, Global

CT32 Android – Wi-Fi Only – No Scanner – 6GB RAM/ 128GB Flash

CT32-XON-30S1FBG

CT32, WLAN, 6.0 inch 2160x1080 Full HD Display, Wi-Fi 6E 802.11 a/b/g/n/ac/d/h/i/r/k/v/w/mc/ax, 2x2 MU-MIMO, BT5.3, Near Field Communications (NFC), 6GB RAM/128GB Flash, No Engine, 13MP Rear Camera / 8MP Front Camera, 4,500mAh Standard Battery, IP67, USB 3.1 Type C OTG, Quick Charge 4.0, Android (GMS), Device Client Pack (DCP) Pre-Loaded (1 Year DCP Term License), Standard, Hand Strap, Global

CT32 SCANNING

Non-Booted - Scan Handle

Use for Scan intensive applications, also compatible with using Rear Camera with Scan Handle installed.

This scan handle is ONLY compatible with Non-Booted charging docks.

Compatible with hand strap installed as well as both Standard and Extended battery packs.



Side View



Rear View

PART NUMBER	DESCRIPTION
1	CT32-SH-UVN
	CT32-HB-UVN-0
	CT32-EB-UVN-0
	CT32-DB-UVN-0
	CT32-CB-UVN-0
	CT32-NB-UVN-0
	CT32-SC-UVN-0

CT32 Scan Handle, compatible with CT32 without protective boot.
Compatible for use with Home Base and Charge Base without removal.

CT32-SC-UVN-0 Non-Booted Single Charge Base

CT32-HB-UVN-0 Non-Booted Home Base
CT32-EB-UVN-0 Non-Booted Ethernet Home Base
CT32-DB-UVN-0 Non-Booted Display Base
CT32-CB-UVN-0 Non-Booted Quad Charge Base
CT32-NB-UVN-0 Non-Booted Quad Net Base

CT32 PROTECTIVE BOOT

Dockable Protective Boot

Use when protective boot is required without scan handle and dockable, compatible with handstrap, standard battery or extended battery installed.



Handstrap

Extended Battery

PART NUMBER	DESCRIPTION
-------------	-------------

1	CT32-PB-STD CT32 Protective Boot. It is compatible with Booted universal docks CT32-xx-UVB.
---	--

CT32 DESKTOP COMMUNICATIONS

Option 1 – USB Type C On-The-Go (OTG) Desktop

USB C Communication to PC/ Mac OR Charging.



PART NUMBER	DESCRIPTION
1	CBL-500-120-S00-06 USB type A to type C, 1.2 m (3.9 ft)
2	50136024-001 KIT,5V/2A PS,5 PLUGS PACKED, ROW Includes US,UK,AU,EU,IN adapters

Option 2 – Portable - USB-C (Quick Charge)

USB Communication to PC/ Mac OR Snap-On Charging with Quick Charging 3.0 support.



PART NUMBER	DESCRIPTION
1	3013-0415-001 KIT, QC3.0 quick charging adaptor with 1.2m dual type-C cable, Black, US/Canada/Japan
OR	3013-0416-001 KIT, QC3.0 quick charging adaptor with 1.2m dual type-C cable, Black, EU/Turkey
OR	3013-0417-001 KIT, QC3.0 quick charging adaptor with 1.2m dual type-C cable, Black, United Kingdom
OR	3013-0418-001 KIT, QC3.0 quick charging adaptor with 1.2m dual type-C cable, Black, Australia/New Zealand

CT32 DESKTOP COMMUNICATIONS

Option 3 – Fixed USB-C with Universal Cup (Non-Booted)

USB-C Charger.



PART NUMBER	DESCRIPTION
1 CT32-SC-UVN-0	Non-Booted Single Charger - Kit includes (CT32-UCP-N), USB type A to type C Cable
OPTIONAL 50136024-001	KIT,5V/2A PS,5 PLUGS PACKED, ROW Includes US,UK,AU,EU,IN adapters

Option 4 – Fixed USB-C with Universal Cup (Booted)

USB-C Charger.



PART NUMBER	DESCRIPTION
1 CT32-SC-UVB-0	Booted Single Charger - Kit includes (CT32-UCP-B), USB type A to type C Cable
OPTIONAL 50136024-001	KIT,5V/2A PS,5 PLUGS PACKED, ROW Includes US,UK,AU,EU,IN adapters

CT32 DESKTOP COMMUNICATIONS

Option 5 – Fixed with Universal Cup (Non-Booted)

USB and optional Ethernet Communication & Single Battery Charger.

Supports Batteries: 50172021-001 - Battery Pack, EDA52/EDA56/EDA57/CT32 (4500mAh)
 50183310-001 - Battery Pack, EDA52/EDA56/EDA57/CT32 (4500mAh)
 3016-3479-001 - Battery Pack, Extended CT32 (6100mAh)



PART NUMBER	DESCRIPTION
1	CT32-HB-UVN-0 Non-Booted HomeBase - Kit includes (CT32-UCP-N), Dock & Power Supply, No Power Cord
OR	CT32-EB-UVN-0 Non-Booted eHomeBase – Ethernet Kit includes (CT32-UCP-N), Dock & Power Supply, No Power Cord
2	321-576-004 Cable Assembly - USB Type A to Type B
3	** IEC C13 AC Power Cord – See Page 30 for Country Specific Power Cords
4	50172021-001 Battery Pack, EDA52/EDA56/EDA57/CT32 (4500mAh)
OR	50183310-001 Battery Pack, EDA52/EDA56/EDA57/CT32 (4500mAh) - USA

Option 6 – Fixed with Universal Cup (Booted)

USB and optional Ethernet Communication & Single Battery Charger.

Supports Batteries: 50172021-001 - Battery Pack, EDA52/EDA56/EDA57/CT32 (4500mAh)
 50183310-001 - Battery Pack, EDA52/EDA56/EDA57/CT32 (4500mAh)
 3016-3479-001 - Battery Pack, Extended CT32 (6100mAh)



PART NUMBER	DESCRIPTION
1	CT32-HB-UVB-0 Booted HomeBase - Kit includes (CT32-UCP-B), Dock & Power Supply, No Power Cord
OR	CT32-EB-UVB-0 Booted eHomeBase – Ethernet Kit includes (CT32-UCP-B), Dock & Power Supply, No Power Cord
2	321-576-004 Cable Assembly - USB Type A to Type B
3	** IEC C13 AC Power Cord – See Page 30 for Country Specific Power Cords
4	50172021-001 Battery Pack, EDA52/EDA56/EDA57/CT32 (4500mAh)
OR	50183310-001 Battery Pack, EDA52/EDA56/EDA57/CT32 (4500mAh) - USA

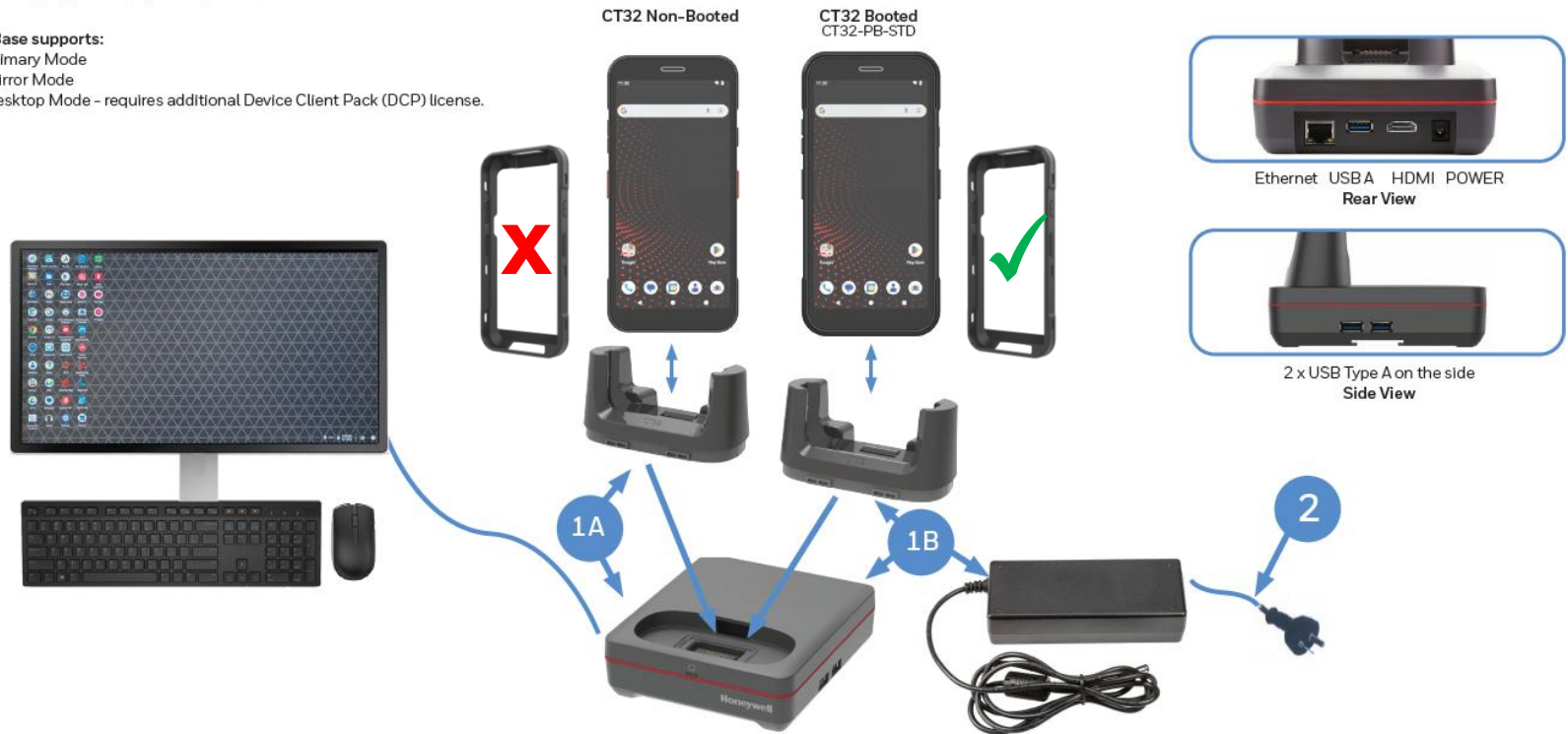
CT32 DESKTOP COMMUNICATIONS

Option 7 - Display Base with Universal Cup

Connect USB peripherals (keyboard, mouse) and External Monitor via HDMI.

Display Base supports:

- Primary Mode
- Mirror Mode
- Desktop Mode - requires additional Device Client Pack (DCP) license.

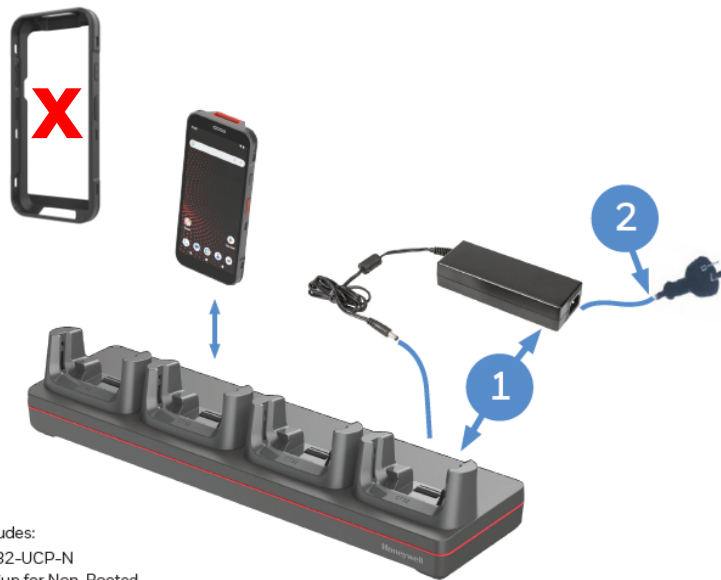


PART NUMBER	DESCRIPTION
1A	CT32-DB-UVN-0 Non-Booted Display Dock - Kit includes (CT32-UCP-N), Display Base & Power Supply, No Power Cord
1B	CT32-DB-UVB-0 Booted Display Dock - Kit includes (CT32-UCP-B), Display Base & Power Supply, No Power Cord
2	** IEC C13AC Power Cord - See Page 30 for Country Specific Power Cords

CT32 CHARGING AND COMMUNICATION

Option 1 - Non-Booted Quad Charger with Universal Cup

Chargebase – Quad Dock Charge Only
 Netbase – Quad Dock with Ethernet
 Not Compatible with CT32-PB-STD Protective Boot

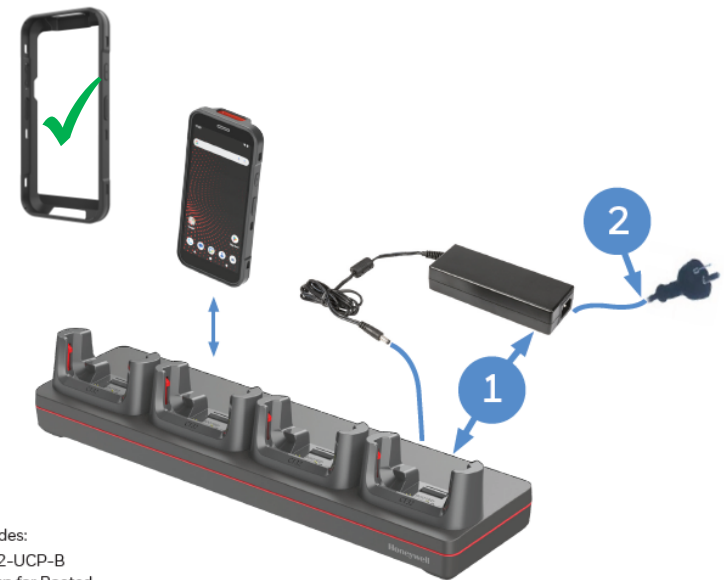


Kit Includes:
 4 x CT32-UCP-N
 CT32 Cup for Non-Booted

PART NUMBER	DESCRIPTION
1	CT32-CB-UVN-0 Non-Booted Chargebase - Kit includes Dock and Power Supply
OR	CT32-NB-UVN-0 Non-Booted Netbase - For Ethernet comms, Kit includes Dock and Power Supply
2	** IEC C13 AC Power Cord – See Page 30 for Country Specific Power Cords

Option 2 - Booted Quad Charger with Universal Cup

Chargebase – Quad Dock Charge Only
 Netbase – Quad Dock with Ethernet
 Compatible with CT32-PB-STD Protective Boot



Kit Includes:
 4 x CT32-UCP-B
 CT32 Cup for Booted

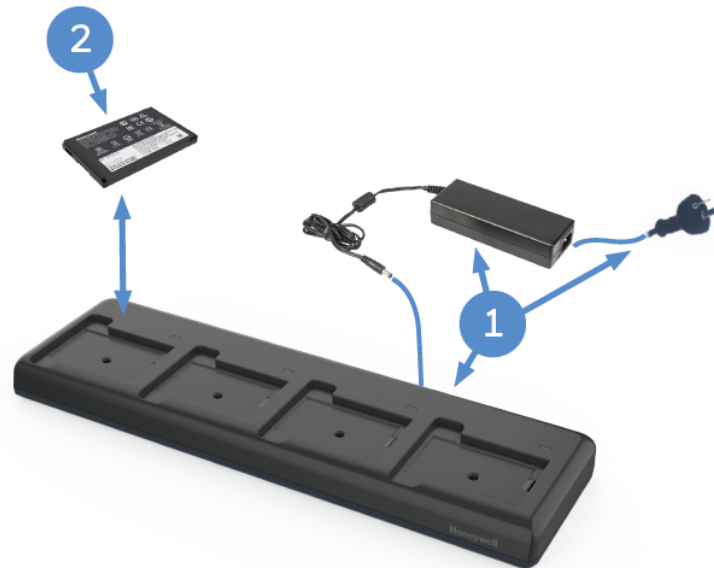
PART NUMBER	DESCRIPTION
1	CT32-CB-LVB-0 Booted Chargebase - Kit includes Dock and Power Supply
OR	CT32-NB-LVB-0 Booted Netbase - For Ethernet comms, Kit includes Dock and Power Supply
2	** IEC C13 AC Power Cord – See Page 30 for Country Specific Power Cords

CT32 CHARGING AND COMMUNICATION

Option 3 - Quad Battery Charger

Charge up to 4 batteries simultaneously

Supports Batteries: 50172021-001 - Battery, Standard, ScanPal EDA52 (4500mAh)
50183310-001 - Battery, Standard, ScanPal EDA52 (4500mAh)
3016-3479-001 - Battery, Extended, ScanPal EDA52 (6100mAh)

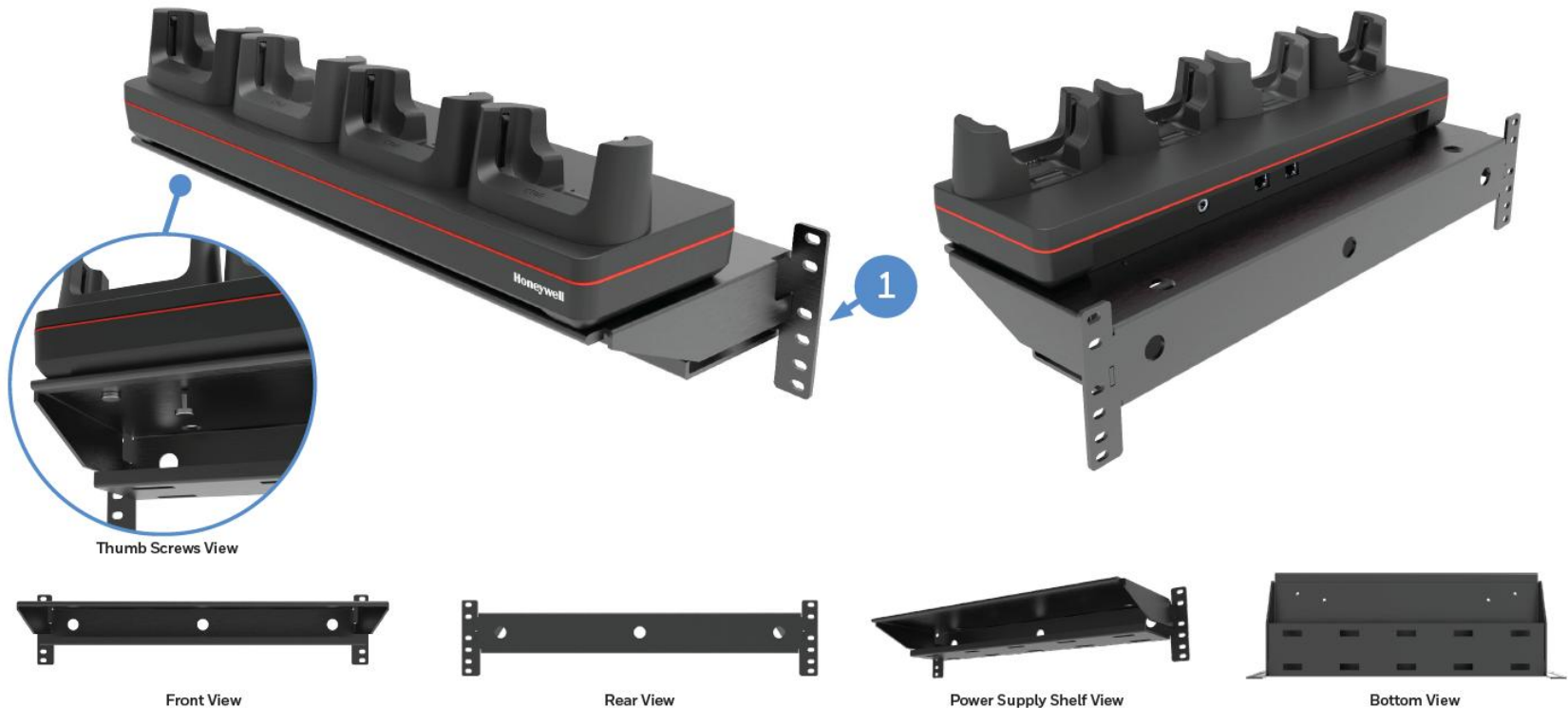


PART NUMBER	DESCRIPTION
1	EDA52-QBC-1 Quad Battery Charger - Kit includes Dock, Power Supply and North America Power Cord
OR	EDA52-QBC-2 Quad Battery Charger - Kit includes Dock, Power Supply and EU Power Cord
OR	EDA52-QBC-3 Quad Battery Charger - Kit includes Dock, Power Supply and United Kingdom Power Cord
OR	EDA52-QBC-5 Quad Battery Charger - Kit includes Dock, Power Supply and Australia Power Cord
2	50172021-001 EDA52 Battery (3.8V, 4,500mAh)

CT32 CHARGING AND COMMUNICATION

Rack / Wall Mount Bracket

The Rack/Wall Mount Bracket has been optimized to work on a standard 19-inch (48cm) rack, as well as mounting directly onto a wall. Compatible with all 4-bay chargers.



Thumb Screws View

Front View

Rear View

Power Supply Shelf View

Bottom View

PART NUMBER	DESCRIPTION
1 CB-BK-01	4 Bay Charger Bracket, Rack / Wall Mount (includes 4 x 50180100-001 Thumb Screws M3.5x10 to securely attach the 4-bay dock to the bracket)

CT32 BATTERY

Spare Battery Options



**CT32
Standard Battery**
CT32-xxx-xxSxxxG

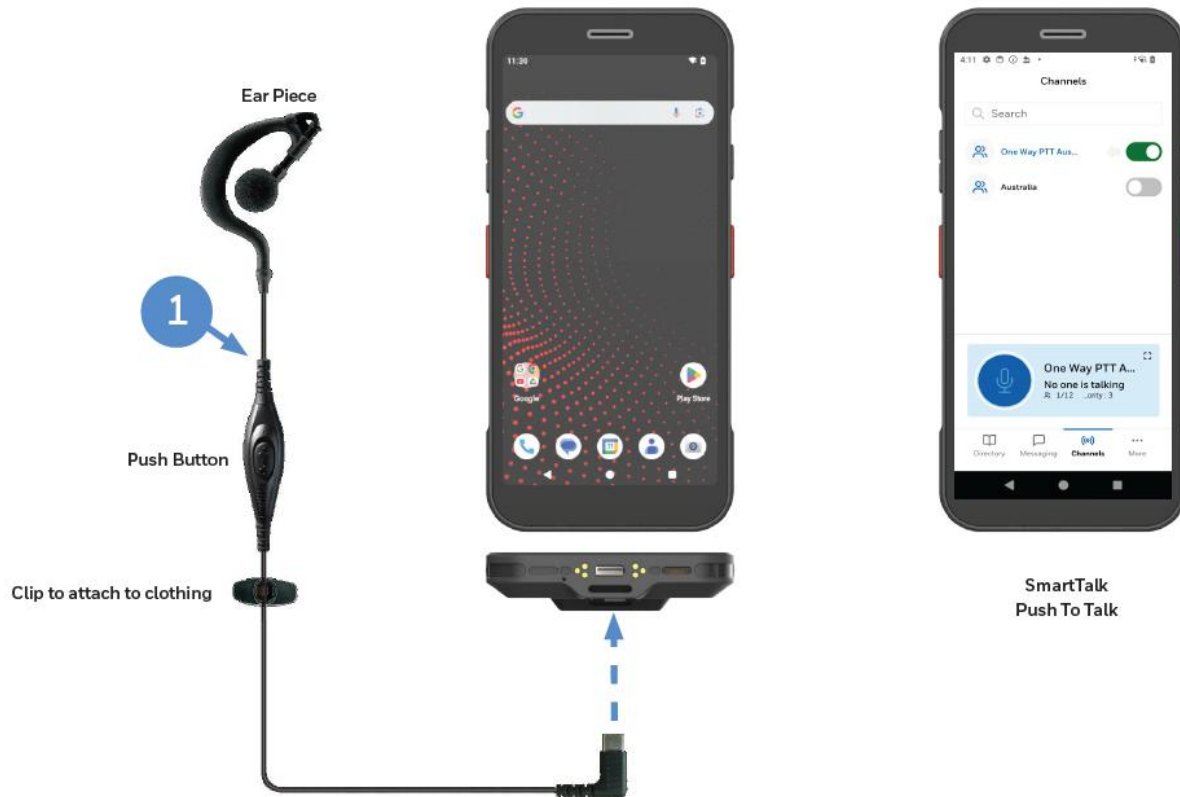
**CT32
Extended Battery**
CT32-xxx-xxExxxG

	PART NUMBER	REGION	DESCRIPTION
1	50172021-001	REST OF WORLD	Standard battery pack for EDA52 / EDA56 WI-FI 6 / EDA57 / CT32 (Li-ion, 3.8V, 4500 mAh) (included in CT32 Global kit CT32-xxx-xxSxxxG)
OR	50183310-001	NORTH AMERICA	Standard Battery pack for ScanPal EDA52 / EDA56 WI-FI 6 / EDA57 / CT32 US (Li-ion, 3.8 V, 4500 mAh) (included in CT32 US kit CT32-xxx-xxSxxxU)
2	3016-3479-001	REST OF WORLD	Extended battery pack for CT32 (Li-ion, 3.8V, 6100 mAh) (included in CT32 Global kit CT32-xxx-xxExxxG)

CT32 HEADSET

USB-C CT32 Push To Talk (PTT) Headset

USB-C audio PTT and VoIP ready to support In-Store Communication with leading 3rd party applications.
Compatible with CT32-PB-STD or CT32-PB-GRY Protective Boot



PART NUMBER	DESCRIPTION
1 MBL-HDST-USBC	Headset with PTT, USB C

CT32 RFID

IH45 RFID Reader with CT32 Non-Booted

Connect the IH45 to the CT32 via Bluetooth or USB.
 IH45 has a user accessible replaceable battery.
 Not Compatible with CT32-PB-STD Protective Boot
 Compatible with CT32 Standard and Extended battery



	PART NUMBER	REGION	DESCRIPTION
1	IH45-0-N00IS00UK	FCC / ANZ	IH45 High-Performance UHF RFID tag reader, US Frequency Range of RFID output (902-928MHz), Includes Battery
OR	IH45-0-N00IS000K	ETSI	IH45 High-Performance UHF RFID tag reader, EU Frequency Range of RFID output (865-868 MHz), Includes Battery
2	IH45-BK-32S		IH45 bracket for non-booted CT32 (with standard and extended battery). Not compatible with protective boot. 4 screws are shipped with bracket as a kit.
3	50155100-001		IH45, IH40 and IH25 Wrist Strap

CT32 RFID CHARGING

Option 1 - IH45 Non-Booted Quad Charger

IH45 shares the same chargers as CT40/ CT45.

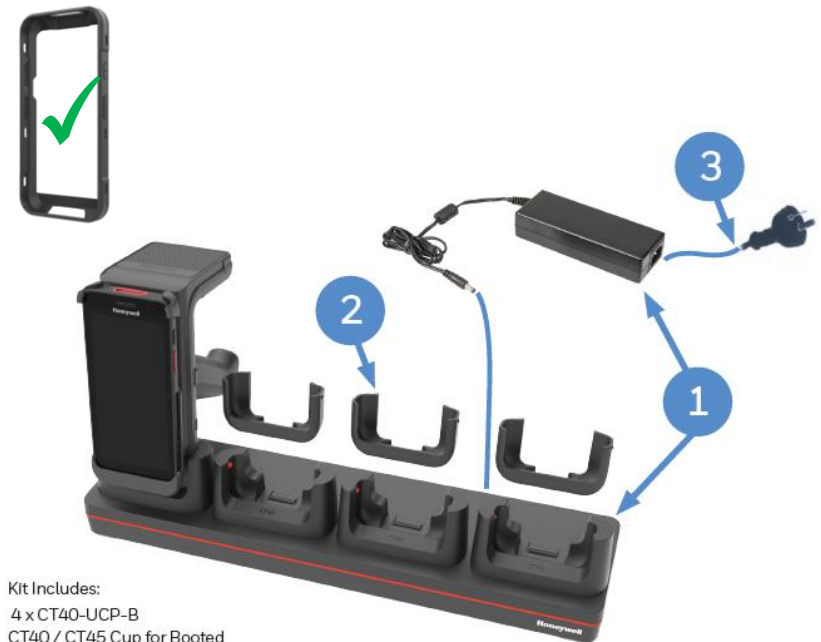


Kit Includes:
4 x CT40-UCP-N
CT40 / CT45 Cup for Non-Booted

Option 2 - IH45 Booted Quad Charger

IH45 shares the same chargers as CT40/ CT45.

When using CT40 Booted chargers, the adapter sleeve is required to fit the IH45.



Kit Includes:
4 x CT40-UCP-B
CT40 / CT45 Cup for Booted

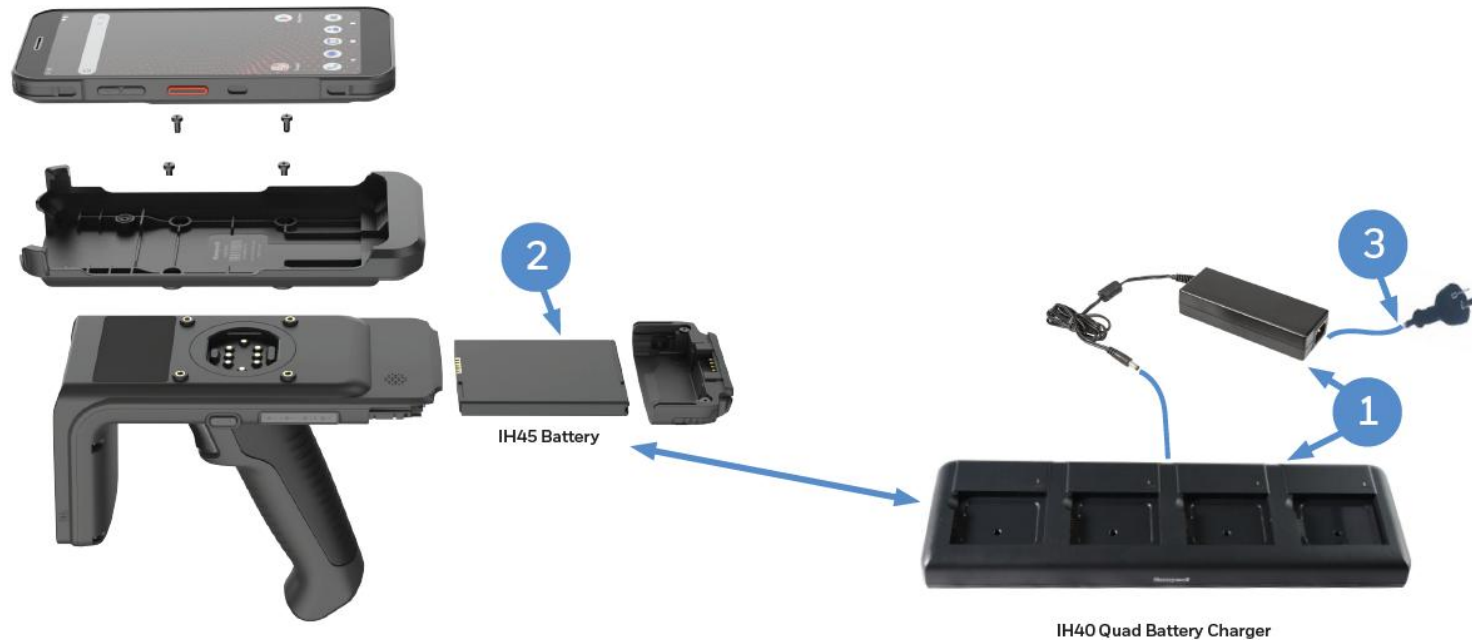
PART NUMBER	DESCRIPTION
1	CT40-CB-UVN-0 Non-Booted Chargebase - Kit includes Dock and Power Supply
OR	CT40-NB-UVN-0 Non-Booted Netbase - For Ethernet comms, Kit includes Dock and Power Supply
2	** IEC C13 AC Power Cord - See Page 30 for Country Specific Power Cords

PART NUMBER	DESCRIPTION
1	CT40-CB-UVB-0 Booted Chargebase - Kit includes Dock and Power Supply
OR	CT40-NB-UVB-0 Booted Netbase - For Ethernet comms, Kit includes Dock and Power Supply
2	IH40-ADP-SLV IH40 Adapter Sleeve for Booted CT40 cup (CT40-UCP-B) - Order 4 adapters per Charge Base
3	** IEC C13 AC Power Cord - See Page 30 for Country Specific Power Cords

CT32 RFID CHARGING

Option 3 - IH45 Quad Battery Charger

IH45 shares the same chargers as EDA50/ EDA51 battery charger.

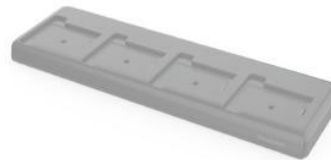
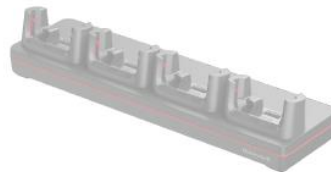


PART NUMBER	DESCRIPTION
1	EDA50-QBC-0 Kit IH25/IH40/EDA50/EDA70/EDA71 Quad Battery Charger. Kit includes Dock, Power Supply, No Power Cord.
2	50129589-001 Accessory, Battery (3.8V, 4,000mAh), EDA50/51/70/71
3	** IEC C13 AC Power Cord – See Page 30 for Country Specific Power Cords

MISCELLANEOUS

Optional Parts

Replacement Power Supplies.





PART NUMBER	DESCRIPTION
50121666-001	Power Adapter, 12V 3A, No Power Cord, Compatible with CT40 Homebase / eHomebase / Quad Battery Charger (Requires IEC C13 AC Power Cord)

PART NUMBER	DESCRIPTION
50121667-001	Power Adapter, 12V 7A, No Power Cord, CT40 Quad Chargebase/Quad Netbase (Requires IEC C13 AC Power Cord)

- Contact **mobit** for more info:
- DE/EN/IT: **+41 (0)44 800 16 30**
CH-8306 Brüttisellen
 - FR: **+41 (0)21 651 98 98**
CH-1020 Renens
 - E-mail: info@mobit.ch
 - Contact form on www.mobit.ch

CT32 CONFIGURATION MAP

Android

										BLUETOOTH/WIFI	WWAN	NFC	MEMORY	IMAGER	BATTERY	OPERATING SYSTEM	DISPLAY	OPTIONS	DOMAIN	DESCRIPTION	NOTES
CT32-										X										Wi-Fi 6E 802.11 a/b/g/n/ac/mc/ax, 2x2 MU-MIMO + Bluetooth 5.3	IEEE 802.11 a/b/g/n/ac/d/h/v/t/k/v/w/mc/ax, 2x2 MU-MIMO ; Wi-Fi certified, Wi-Fi 6E certified Bluetooth V5.3 and Bluetooth Low Energy (BLE)
										0										No WWAN	
										1										5G, LTE (4G) GPS, UMTS/HSPA+ (3G) GSM/GPRS/EDGE	WWAN RADIO - 1x eSIM & 1x Nano SIM Slot, 5G NR NSA: n40/n41/n77/n78/n79 5G NR SA: N1/N2/N3/N5/N7/N8/N12/N13/N14/N18/N20/ N25/N26/N28/N30/N38/N40/N41/N48/N66/N71/N77/N78/N79 FDD-LTE: B1/B2/B3/B4/B5/B7/B8/B12/B13/B14/B17/B18/B19/B20/B25/B26/B28/B30/B66/B71
										N										Near Field Communications (NFC)	ISO/IEC 1443A, ISO/IEC 1443 B, ISO/IEC 15693, MIFARE 1K/4K, MIFARE DESFire, Sony FeliCa, ISO/IEC 18092 Contactless payment support, ECP 1.0 and ECP 2.0
										--											
											3									6GB RAM, 128GB Flash Memory	Qualcomm QCS4490/ QCM4490 octa-core 2.4GHz
											5									8GB RAM, 128GB Flash Memory	Qualcomm QCS4490/ QCM4490 octa-core 2.4GHz
												0								No Scanner	
												7								1D/2D Imager (S0703SR) – Standard Range	
												8								1D/2D Imager (S0803FR) – FlexRange™	
												E								Extended Battery 6,100mAh	
												S								Standard Battery 4,500mAh	
												1								Android (GMS)	Google Mobile Services (GMS) certified – Play Store
												2								Android (Non-GMS)	
													F							Full HD Display	
														B						Standard	Grey Colour with Red highlights
															C					China (WWAN or Wi-Fi)	China
															G					Global (WWAN or Wi-Fi)	Algeria, Argentina, Australia, Austria, Belgium, Brazil, Chile, Columbia, Costa Rica, Czech Republic, Denmark, Ecuador, Egypt, Estonia, Finland, France, Germany, Greece, Hungary, Indonesia, Ireland, Israel, Italy, Japan, Lithuania, Malaysia, Mexico, Morocco, Netherlands, New Zealand, Norway, Peru, Philippines, Poland, Portugal, Romania, Saudi Arabia, Serbia, Singapore, Slovakia, Slovenia, South Africa, South Korea, Spain, Sweden, Switzerland, Thailand, Tunisia, Turkey, UAE, United Kingdom, Vietnam
															N					India (WWAN or Wi-Fi)	India - No WLAN 6GHz support
															U					United States of America & Canada (WWAN or Wi-Fi)	Canada, United States of America



CT32 SOFTWARE

Device Client Pack


The Device Client Pack (DCP) includes Launcher, Enterprise Browser, BasicTE, and Mobility Web SDK, these applications are pre-loaded on the device.

All CT32 units include a 1 Year DCP Termed Pre-License for initial evaluation of the DCP applications (it does NOT include a Perpetual Pre-License), after the 1 Year Term period expires, a Perpetual or Term license is required to be purchased.


There are two licensing options that can be purchased for DCP:

1. Perpetual License Purchase DCP-001 - Perpetual Licenses operate without expiration for the authorized software version features, and includes 1 year of Maintenance. Add additional Software Maintenance separately.
2. Term + Maintenance License Purchase DCP-SFT1, DCP-SFT2, DCP-SFT3, DCP-SFT4 or DCP-SFT5 - Term + Maintenance Licenses provide software operation, software new version features, and tech support, all for a defined period.


Device Client Pack



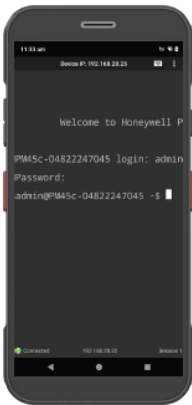
Launcher




Launcher - gives the customer total control over which apps can be run on the device.




BasicTE



BasicTE Android device Terminal Emulation is a simplified alternative for those not yet ready to upgrade to SmartTE.




Enterprise Browser




Enterprise Browser provides corporations the ability to run standard web applications from a controlled environment.

PART NUMBER	DESCRIPTION
DCP-SFT1	Device Client Pack - 1 Year Term + Maintenance (License covers Launcher, Enterprise Browser, BasicTE, and Mobility Web SDK)
DCP-SFT2	Device Client Pack - 2 Year Term + Maintenance (License covers Launcher, Enterprise Browser, BasicTE, and Mobility Web SDK)
DCP-SFT3	Device Client Pack - 3 Year Term + Maintenance (License covers Launcher, Enterprise Browser, BasicTE, and Mobility Web SDK)
DCP-SFT4	Device Client Pack - 4 Year Term + Maintenance (License covers Launcher, Enterprise Browser, BasicTE, and Mobility Web SDK)
DCP-SFT5	Device Client Pack - 5 Year Term + Maintenance (License covers Launcher, Enterprise Browser, BasicTE, and Mobility Web SDK)

Order Separately



SmartTE Terminal Emulator



SmartTE

Single Session License

This license allows a single telnet session to be active on the device.

PART NUMBER	DESCRIPTION
SMARTTE-001	SmartTE - Single path with 1 Year Maintenance
SMARTTE-SFT1	SmartTE - 1 Year Software Maintenance
SMARTTE-SFT2	SmartTE - 2 Year Software Maintenance
SMARTTE-SFT3	SmartTE - 3 Year Software Maintenance
SMARTTE-SFT4	SmartTE - 4 Year Software Maintenance
SMARTTE-SFT5	SmartTE - 5 Year Software Maintenance
SMARTTE-SND-SFT1	SmartTE - High availability secondary backup or development server 1yr maintenance. Not for primary server. Purchase one per device.

Multi Session License

This license allows multiple telnet sessions to be concurrently active on the device.

PART NUMBER	DESCRIPTION
SMARTTE-002	SmartTE - Multi Sessions with 1 Year Maintenance
SMARTTE-SFTM1	SmartTE - 1 Year Multi Sessions Software Maintenance
SMARTTE-SFTM2	SmartTE - 2 Year Multi Sessions Software Maintenance
SMARTTE-SFTM3	SmartTE - 3 Year Multi Sessions Software Maintenance
SMARTTE-SFTM4	SmartTE - 4 Year Multi Sessions Software Maintenance
SMARTTE-SFTM5	SmartTE - 5 Year Multi Sessions Software Maintenance
SMARTTE-SND-SFT1	SmartTE - High availability secondary backup or development server 1yr maintenance. Not for primary server. Purchase one per device.

Terminal Emulator - Full featured SmartTE allows legacy green screen apps to be transformed to the look and feel of native apps. They can also utilize traditional single or multi-session StayLinked Licenses.

SmartTE is Pre-Loaded, but requires license SMARTTE-001 or SMARTTE-002 to be purchased separately.

HONEYWELL EDGE SERVICES

CT32 - Repair Services

Honeywell Edge Services give you the confidence of having leading-class technologies combined with service and support plans that are designed to keep you operational for longer.

For a full description of maintenance services, including terms and conditions, please see <https://automation.honeywell.com/us/en/services/productivity-solutions/support-services/maintenance-services>

Gold Repair Services - 5 Year

The Edge Services Gold Support contract allows flexibility for you to select the right coverage for your organization, including 5-Day Depot Repairs and:

Service Overview

- Repair or replacement (at Honeywell discretion) for damaged components, wear and tear, accidental damage
- Flexibility to add any Add-On Service
- Android Service - Includes Android OS Upgrades, Maintenance Releases and Security Patches

PART NUMBER	DESCRIPTION
-------------	-------------

SVCCT32-SG5N	CT32, Edge Service, GOLD Maintenance Contract, 5 Day Turnaround, 5 Year, New Contract
--------------	---

Add-On Accessory Replacement Service

Provides replacement chargers, docks, charging cables, or scan handles should they be damaged or stop working.

ADD SVCACC-MOB5	AddOn, Edge Service, Accessory Service, Mobility, 5 Year. Service covers docks, charger cradles, scan handles
------------------------	---

Add-On Battery Replacement Service

Provides replacement batteries every 18 months after purchase.

ADD SVCBATTERY-MOB5	AddOn, Edge Service, Battery Service, Mobility, 5 Year, 2 Replacement Battery over life of contract
----------------------------	---

Add-On Device Replacement Service

Replacement devices should a device be damaged beyond repair.

ADD SVCREPLACE-MOB5	AddOn, Edge Service, Device Replacement, Mobility, 5 Year
----------------------------	---

Add-On Image Management Service

Ensures that when a device returns from being repaired, it has all the proper applications loaded back on the device.

ADD SVCIMAGEMGMT-MOB5	AddOn, Edge Service, Image Service, Mobility, 5 Year
------------------------------	--

Add-On Spare Management Service

Manages every aspect of your spare pool.

ADD SVCSPAREMGMT-MOB5	AddOn, Edge Service, Advanced Exchange, Mobility, 5 Year. Customer owned spare pool, Minimum Purchase required, contact your local Honeywell Service Representative for more information.
------------------------------	---

Add-On 2-Day Turnaround Depot Upgrade

Upgrade your Gold Maintenance Contract from 5-Day to 2-Day turnaround at the repair depot.

ADD SVC2DAYDEPOT-MOB5	AddOn, Edge Service, 2-Day Depot Upgrade, 5-Year Agreement, Requires purchase of a 5 Year Gold Maintenance Contract.
------------------------------	--

Gold Repair Services - 3 Year

The Edge Services Gold Support contract allows flexibility for you to select the right coverage for your organization, including 5-Day Depot Repairs and:

Service Overview

- Repair or replacement (at Honeywell discretion) for damaged components, wear and tear, accidental damage
- Flexibility to add any Add-On Service
- Android Service - Includes Android OS Upgrades, Maintenance Releases and Security Patches

PART NUMBER	DESCRIPTION
-------------	-------------

SVCCT32-SG3N	CT32, Edge Service, GOLD Maintenance Contract, 5 Day Turnaround, 3 Year, New Contract
--------------	---

Add-On Accessory Replacement Service

Provides replacement chargers, docks, charging cables, or scan handles should they be damaged or stop working.

ADD SVCACC-MOB3	AddOn, Edge Service, Accessory Service, Mobility, 3 Year. Service covers docks, charger cradles, scan handles
------------------------	---

Add-On Battery Replacement Service

Provides replacement batteries every 18 months after purchase.

ADD SVCBATTERY-MOB3	AddOn, Edge Service, Battery Service, Mobility, 3 Year, 1 Replacement Battery over life of contract
----------------------------	---

Add-On Device Replacement Service

Replacement devices should a device be damaged beyond repair.

ADD SVCREPLACE-MOB3	AddOn, Edge Service, Device Replacement, Mobility, 3 Year
----------------------------	---

Add-On Image Management Service

Ensures that when a device returns from being repaired, it has all the proper applications loaded back on the device.

ADD SVCIMAGEMGMT-MOB3	AddOn, Edge Service, Image Service, Mobility, 3 Year
------------------------------	--

Add-On Spare Management Service

Manages every aspect of your spare pool.

ADD SVCSPAREMGMT-MOB3	AddOn, Edge Service, Advanced Exchange, Mobility, 3 Year. Customer owned spare pool, Minimum Purchase required, contact your local Honeywell Service Representative for more information.
------------------------------	---

Add-On 2-Day Turnaround Depot Upgrade

Upgrade your Gold Maintenance Contract from 5-Day to 2-Day turnaround at the repair depot.

ADD SVC2DAYDEPOT-MOB3	AddOn, Edge Service, 2-Day Depot Upgrade, 3-Year Agreement, Requires purchase of a 3 Year Gold Maintenance Contract.
------------------------------	--

HONEYWELL EDGE SERVICES

CT32 - Repair Services Coverage

For Best-In-Class Service

BASIC	GOLD										
<p>CT32</p>  <p>Warranty Cover Against Product Defect</p>	<p>Gold Coverage:</p> <ul style="list-style-type: none"> • Accidental Damage • Wear & Tear • Android Service <p>Includes Replacement of:</p> <ul style="list-style-type: none"> • Handstrap • Screen Protector   <p>Flexible GOLD Add-Ons ordered separately</p> <table border="0"> <tr> <td>• SVCACC-MOB3</td> <td>Accessories</td> </tr> <tr> <td>• SVCBATTERY-MOB3</td> <td>Batteries</td> </tr> <tr> <td>• SVCREPLACE-MOB3</td> <td>Device Replacement</td> </tr> <tr> <td>• SVCIMAGEMGMT-MOB3</td> <td>Image Service</td> </tr> <tr> <td>• SVCSPAREMGMT-MOB3</td> <td>Advanced Exchange</td> </tr> </table>	• SVCACC-MOB3	Accessories	• SVCBATTERY-MOB3	Batteries	• SVCREPLACE-MOB3	Device Replacement	• SVCIMAGEMGMT-MOB3	Image Service	• SVCSPAREMGMT-MOB3	Advanced Exchange
• SVCACC-MOB3	Accessories										
• SVCBATTERY-MOB3	Batteries										
• SVCREPLACE-MOB3	Device Replacement										
• SVCIMAGEMGMT-MOB3	Image Service										
• SVCSPAREMGMT-MOB3	Advanced Exchange										

Contact **mobit** for more info:

- DE/EN/IT: **+41 (0)44 800 16 30**, CH-8306 Brüttisellen
- FR: **+41 (0)21 651 98 98**, CH-1020 Renens
- E-mail: info@mobit.ch
- Contact form on www.mobit.ch

Honeywell CT32 Mobile Computer

Configuration Guide

Contact **mobit** for more info:

- DE/EN/IT: **+41 (0)44 800 16 30**, CH-8306 Brüttisellen
- FR: **+41 (0)21 651 98 98**, CH-1020 Renens
- E-mail: info@mobit.ch
- Contact form on www.mobit.ch



ideal with
mobit m|ES
software
solution

